

G a l o p o g o s
G a l o p o g o s

G a l o p o g o s

G a l o p o g o s
G a l o p o g o s

G a l o p o g o s

G a l o p o g o s

G a l o i p o g o s

G a l a p a g a s

G a l a p a g a s

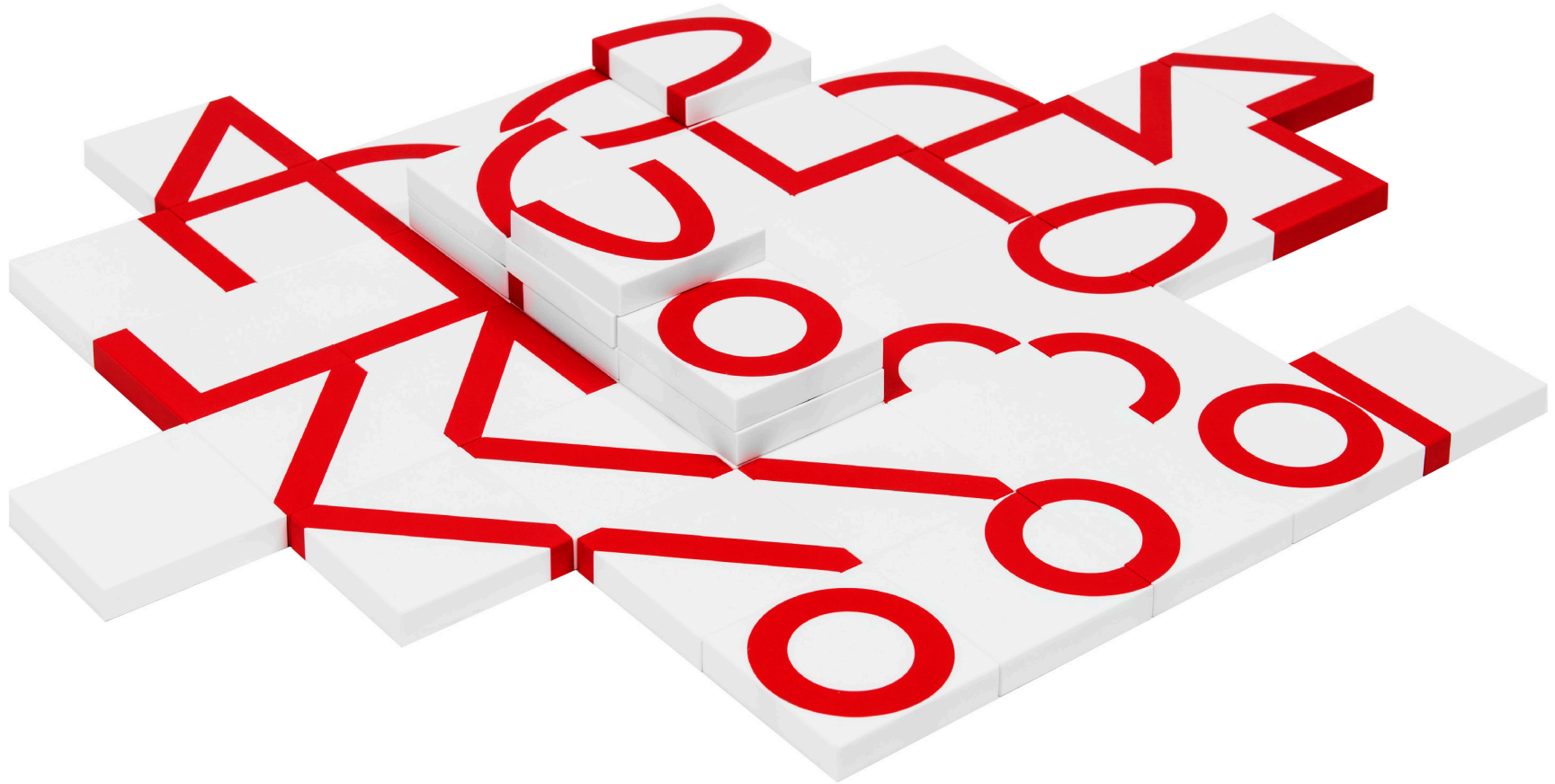
G a l a p a g a s

G a l a p a g a s

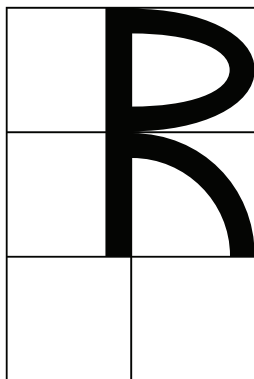
G a l a p a g a s

G a l a p a g a s

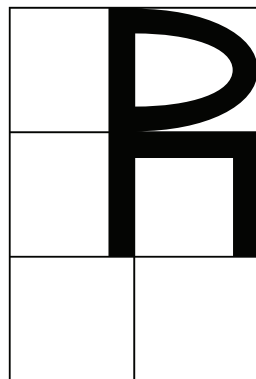
PHOTOGRAPHY: NOORTJE KNULST



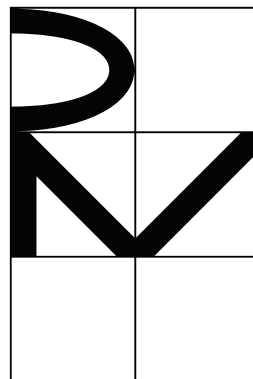
CONSTRUCTION of 'R'
140 PT



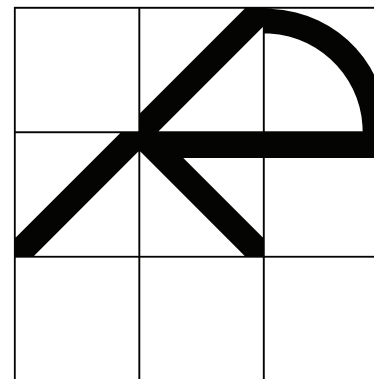
A



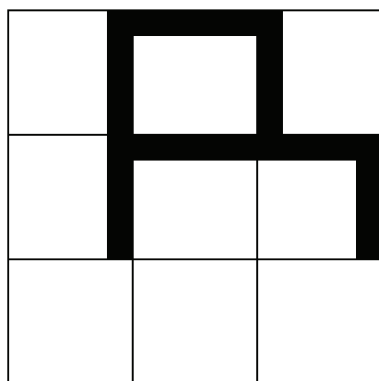
AB



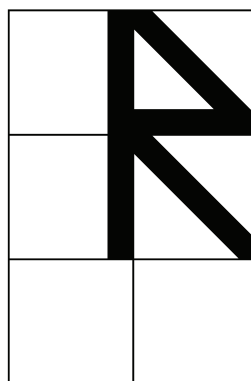
ABC



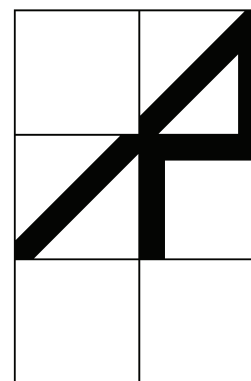
AC



B



BC



C

A
LIGHT

L i g h t

A
LIGHT GRID

L i g h t

A
REGULAR

R e g u l a r

A
REGULAR GRID

R e g u l

A
SEMIBOLD

S e m i B

A
SEMIBOLD GRID

S e m i

A
BOLD

B o l d

A
BOLD GRID

B o l d

A
BLACK

B l a c k

A
BLACK GRID

B l a c k

AB
LIGHT

L ' g h t

AB
LIGHT GRID

L ' g h t

AB
REGULAR

R e g u n a

AB
REGULAR GRID

R e g u n a

AB
SEMIBOLD

S e m n ' B

AB
SEMIBOLD GRID

S e m n ' B

AB
BOLD

B a l d

AB
BOLD GRID

B a l d

AB
BLACK

B a l d

AB
BLACK GRID

B a l d

ABC
LIGHT

Lighthouse

ABC
LIGHT GRID

Lighthouse

ABC
REGULAR

Revol

ABC
REGULAR GRID

Revol

ABC
SEMIBOLD

Revol

ABC
SEMIBOLD GRID

Revol

ABC
BOLD

Revol

ABC
BOLD GRID

Revol

ABC
BLACK

Revol

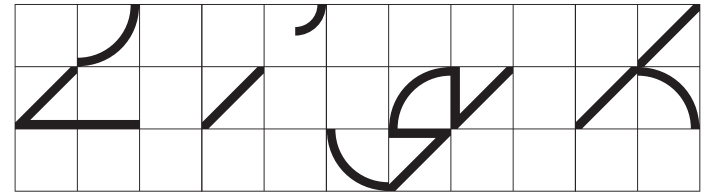
ABC
BLACK GRID

Revol

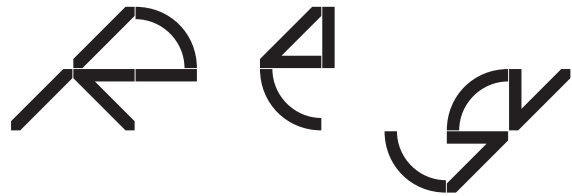
AC
LIGHT



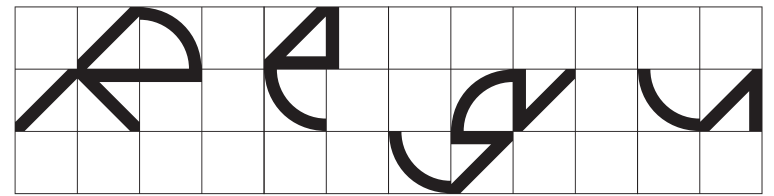
AC
LIGHT GRID



AC
REGULAR



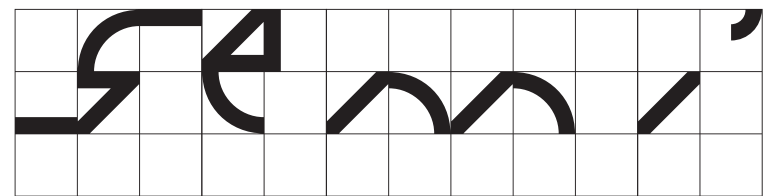
AC
REGULAR GRID



AC
SEMIBOLD



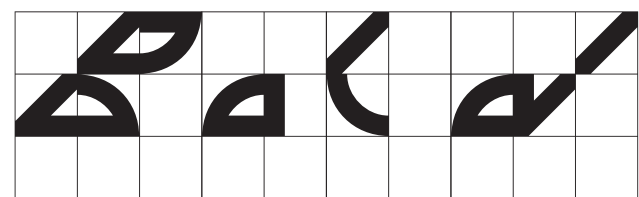
AC
SEMIBOLD GRID



AC
BOLD



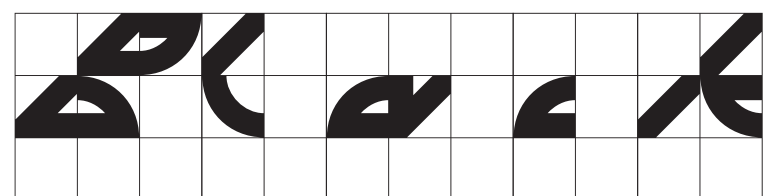
AC
BOLD GRID



AC
BLACK



AC
BLACK GRID



B
LIGHT

L i g h t +

B
LIGHT GRID

L i g h t +

B
REGULAR

A e g

B
REGULAR GRID

A e g u l

B
SEMIBOLD

S e m i B

B
SEMIBOLD GRID

S e m i B

B
BOLD

B o l d

B
BOLD GRID

B o l d

B
BLACK

B l a c k

B
BLACK GRID

B l a c k

BC
LIGHT

L i g h t

BC
LIGHT GRID

L i g h t

BC
REGULAR

R e g u l a r

BC
REGULAR GRID

R e g u l a r

BC
SEMIBOLD

S e m i b o l d

BC
SEMIBOLD GRID

S e m i b o l d

BC
BOLD

B o l d

BC
BOLD GRID

B o l d

BC
BLACK

B l a c k

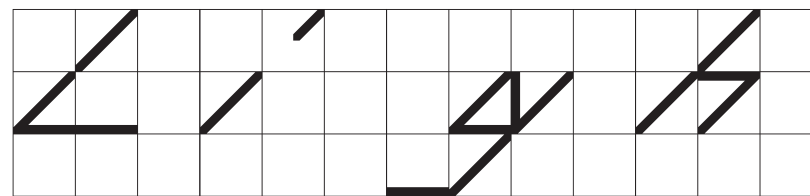
BC
BLACK GRID

B l a c k

C
LIGHT



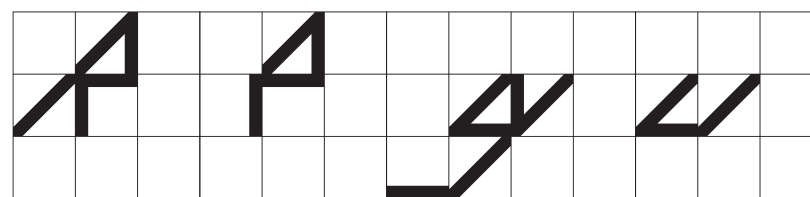
C
LIGHT GRID



C
REGULAR



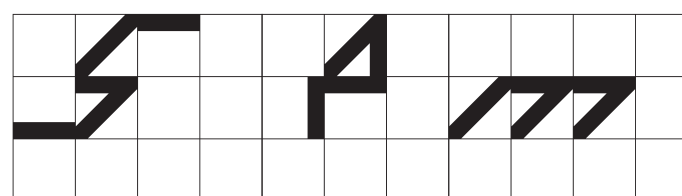
C
REGULAR GRID



C
SEMIBOLD



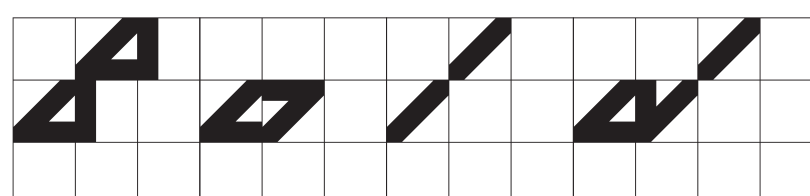
C
SEMIBOLD GRID



C
BOLD



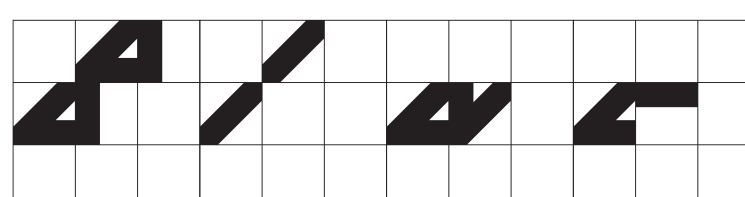
C
BOLD GRID



C
BLACK



C
BLACK GRID



BACKGROUND

Just as the Galapagos Islands are home to a vast number of unique species, the ABC Galapagos typeface is made up of a range of unique characters whose forms evolve from one another. The idea for the font stems from the designer Felix Salut's Galapagos Game, a physical set of building blocks designed as a tool to draw letter shapes. We teamed up with Felix to transform his physical game into a starkly futuristic yet subtly biological font.

ABC Galapagos emerges from 42 different cuts of varying styles, including a rounded, straight, and angular style, which can be combined with hybrids such as rounded-straight, rounded-angular, straight-angular, and rounded-straight-angular. Each style then comes in five weights, including grid and no-grid versions. Using the stylistic alternatives built into the typeface, all characters can be moved up and down along a vertical grid, allowing designers to play god with varying chains of the font's DNA.

TECHNICALITIES

CREDITS

Galapagos Modular System: Felix Salut
Galapagos Typeface: Felix Salut, Dinamo (Johannes Breyer & Fabian Harb)
Production: Gustavo Ferreira, Dinamo (Robert Janes), Chi Long Trieu
Galapagos App: Felix Salut, Alessandro Saccoia, Dinamo (Johannes Breyer & Fabian Harb)

SUPPORTED LANGUAGES

Afrikaans, Albanian, Basque, Bemba, Bosnian, Breton, Catalan, Croatian, Czech, Danish, Dutch, English, Esperanto, Estonian, Faroese, Filipino, Finnish, French, Frisian, Friulian, Gaelic, Galician, German, Greenlandic, Hungarian, Icelandic, Indonesian, Irish, Italian, Kinyarwanda, Latin, Latvian, Lithuanian, Luxembourgish, Malay, Maltese, Montenegrin, Māori, Norwegian, Occitan, Polish, Portuguese, Romanian, Romansh, Inari Sami, Lule Sami, Northern Sami, Southern Sami, Serbian (Latin), Slovak, Slovenian, Spanish, Swahili, Swedish, Turkish, Welsh and more

FILE FORMATS

Desktop format: otf
Web formats: woff, woff2

AVAILABLE LICENSES

Print, Web, App, ePub, Social Media, Video/Broadcasting, Unlimited/Enterprise, Digital POS, Logo/Word mark, Game

Not all of the licenses we provide are available online. Get in touch for a custom quote mail@abcdinamo.com

Typefaces may only be used as dictated by the terms of the Dinamo End User License Agreement (EULA): www.abcdinamo.com/licenses

CHARACTER SET AC

UPPERCASE

A B C D E F G H I J K L M N
O P Q R S T U V W X Y Z

LOWERCASE

a b c d e f g h i j k l m n
o p q r s t u v w x y z

LIGATURES

f i f l f f f f i f f l e e

FIGURES

0 1 2 3 4 5 6 7 8 9

PUNCTUATION

‘ ’ „ … „ ‚ ‰ ‚ ‚ † ‡ § – — — —
» » « » ‹ › « » ‹ ‹ © ®
^ () § § / /

MATHEMATICAL SYMBOLS

+ − × ÷ = ≠ ∠ ∩ ∪ ∴ ∽ ∞ ∫ √ ∂ ∫ ∫ ∫ ∫

SYMBOLS

☐ ☐ ☐ ☐ ☐ ☐
‡ ‡ ‡ ‡ ‡
↑ → ↓ ← ↗ ↘ ↙ ↚ ↛ ↜ ↝
∞ ∞ ∞ ∞ ∞ ∞ ∞
∞ ∞ ∞ ∞ ∞ ∞ ∞

ACCENTED CHARACTERS

Á Ā Ä Å Æ Ą Æ Ą
Ć Ć Ć Ć Ć Ć Ć Ć Ć
Ğ Ğ Ğ Ğ Ğ Ğ Ğ Ğ Ğ
Ł Ł Ł Ł Ł Ł Ł Ł
Ō Ō Ō Ō Ō Ō Ō Ō
Š Š Š Š Š Š Š Š
Ú Ú Ú Ú Ú Ú Ú Ú
Ŵ Ŵ Ŵ Ŵ Ŵ Ŵ Ŵ Ŵ
á â ã ä å æ ç è é ê ë
ê ê ê ê ê ê ê ê
ğ ğ ğ ğ ğ ğ
ñ ñ ñ ñ ñ ñ ñ ñ
ı ı ı ı ı ı ı ı
ú û ü ü ü ü ü ü
ý ŷ ŷ ŷ ŷ ŷ ŷ ŷ

CHARACTER SET BC

UPPERCASE

A B C D E F G H I J K L M N
O P Q R S T U V W X Y Z

LOWERCASE

a b c d e f g h i j k l m n
o p q r s t u v w x y z

LIGATURES

fi A ff fh fA tt

FIGURES

0 1 2 3 4 5 6 7 8 9

PUNCTUATION

.,:;|...! ;'> <'■ * # - - — —
/ \ () { } []
“ ” ‘ ’ ’ ’ ’ ’ ’ ’ ’ ’ ’ ’ ’ ’ ’
‘ ’ ’ ’ ‘ ’ ’ ‘ ’ ’ ‘ ’ ’ ‘ ’ ’ ‘ ’ ’

MATHEMATICAL
SYMBOLS

+ − × ÷ = ≠ ∠ ∵
≥ ≤ ± ≈ √ ∞ ◻
√ ∫ ∂ ∫ ∫ ∫ ∫ ∫

SYMBOLS

4 \$ € ± ¥ ☐ ☐ ☐ ☐ ☐ ☐ ☐
↑ → ↓ ← ↗ ↘ ↙ ↚
↖ ↗ ↘ ↙ ↖ ↗
☐ ◻ ◻ ◻ ™ ◻ ◻ ◻ ◻ ◻ ◻
☒ ☒ ☒ ☒ ☒ ☒ ☒ ☒ ☒ ☒ ☒ ☒

ACCENTED
CHARACTERS

Á Â Ã Ä Å Ā Ǻ ǻ Ǽ Ǿ ǿ
Ć Ć Š Ÿ Đ Ǹ ǹ Ẁ ẁ Ẃ ẃ
Ǫ ǫ Ǭ ǭ Ǯ ǯ ǳ Ǵ
Ó Ȯ ȯ Ȱ ȱ Ȳ ȳ ȴ ȵ
Ƕ Ƿ Ǹ ǹ Ǻ ǻ Ǽ Ǿ ǿ
Ũ Ǻ ǻ Ǽ Ǿ ǿ Ǻ ǻ Ǽ Ǿ ǿ
Ý Ȳ ȳ ȴ ȵ Ẁ ẁ Ẃ ẃ

đ ċ š Ÿ đ ǹ Ẁ ẁ Ẃ ẃ
Ǫ ǫ Ǭ ǭ Ǯ ǯ ǳ Ǵ
Ȯ ȯ Ȱ ȱ Ȳ ȳ ȴ ȵ
Ƕ Ƿ Ǹ ǹ Ǻ ǻ Ǽ Ǿ ǿ
Ũ Ǻ ǻ Ǽ Ǿ ǿ Ǻ ǻ Ǽ Ǿ ǿ
Ý Ȳ ȳ ȴ ȵ Ẁ ẁ Ẃ ẃ

CHARACTER SET C

UPPERCASE

A B C D E F G H I J K L M N
O P Q R S T U V W X Y Z

LOWERCASE

a b c d e f g h i j k l m n
o p q r s t u v w x y z

LIGATURES

f i f l f f f f i f f i
H

FIGURES

0 1 2 3 4 5 6 7 8 9

PUNCTUATION

.,:;.../;?@#*#---_
,,,""'''|}{}~|||[]
/|()&^&^[]]

MATHEMATICAL SYMBOLS

+ - x ÷ = ≠ > < > < ≈ ~ ∞ ∆
√ ∆ √ ∆ ∆ ∆ ∆ ∆

ACCENTED CHARACTERS

Á Ā Á Á À Ā Ā Ā Æ É Ê Ë Ć Ć Ć Ć
Đ Đ Đ É Ě Ě Ě Ě Ě Ě Ě Ě Ě Ě Ě
Ĥ Ĥ Ĥ Ĥ Ĥ Ĥ Ĥ Ĥ Ĥ Ĥ Ĥ Ĥ Ĥ Ĥ
Ń Ń Ń Ń Ń Ń Ń Ń Ń Ń Ń Ń Ń Ń Ń Ń
Ł Ł Ł Ł Ł Ł Ł Ł Ł Ł Ł Ł Ł Ł Ł Ł
Ů Ů Ů Ů Ů Ů Ů Ů Ů Ů Ů Ů Ů Ů Ů Ů
Ÿ Ÿ Ÿ Ÿ Ÿ Ÿ Ÿ Ÿ Ÿ Ÿ Ÿ Ÿ Ÿ Ÿ Ÿ Ÿ

á ā á á à ā ā ā æ é ê ë ċ ċ ċ ċ
đ đ đ é ě ě ě ě ě ě ě ě ě ě ě
ĥ ĥ ĥ ĥ ĥ ĥ ĥ ĥ ĥ ĥ ĥ ĥ ĥ ĥ ĥ ĥ
ń ń ń ń ń ń ń ń ń ń ń ń ń ń ń ń
ł ł ł ł ł ł ł ł ł ł ł ł ł ł ł ł
ů ů ů ů ů ů ů ů ů ů ů ů ů ů ů ů
ÿ ŷ ŷ ŷ ŷ ŷ ŷ ŷ ŷ ŷ ŷ ŷ ŷ ŷ ŷ ŷ

SYMBOLS

☐ ☐ ☐ ☐ ☐ ☐ ☐ ☐ ☐ ☐ ☐ ☐ ☐ ☐ ☐ ☐
4 5 6 7 8
↑ → ↓ ← ↗ ↘ ↙ ↚ ↛ ↜ ↝ ↞ ↠ ↡
♠ ♣ ♡ ♠ ♣ ♡ ♠ ♣ ♡ ♠ ♣ ♡ ♠ ♣ ♡ ♠ ♣ ♡

COMPLETE MODULARITY
120 PT

STANDARD

R	u	n	t	i	n	e
R	u	n	t	i	n	e

UP

R	u	n	t	i	n	e
R						

DOWN

R	u	n	t	i	n	e
R	u	n	t	i	n	e

60 PT C REGULAR + REGULAR GRID

A u i ' d v B A H A
b o d y i n
f w s y A v m A n t o t
[Grid with letters: s y z z m o t h]

150 PT BC BOLD

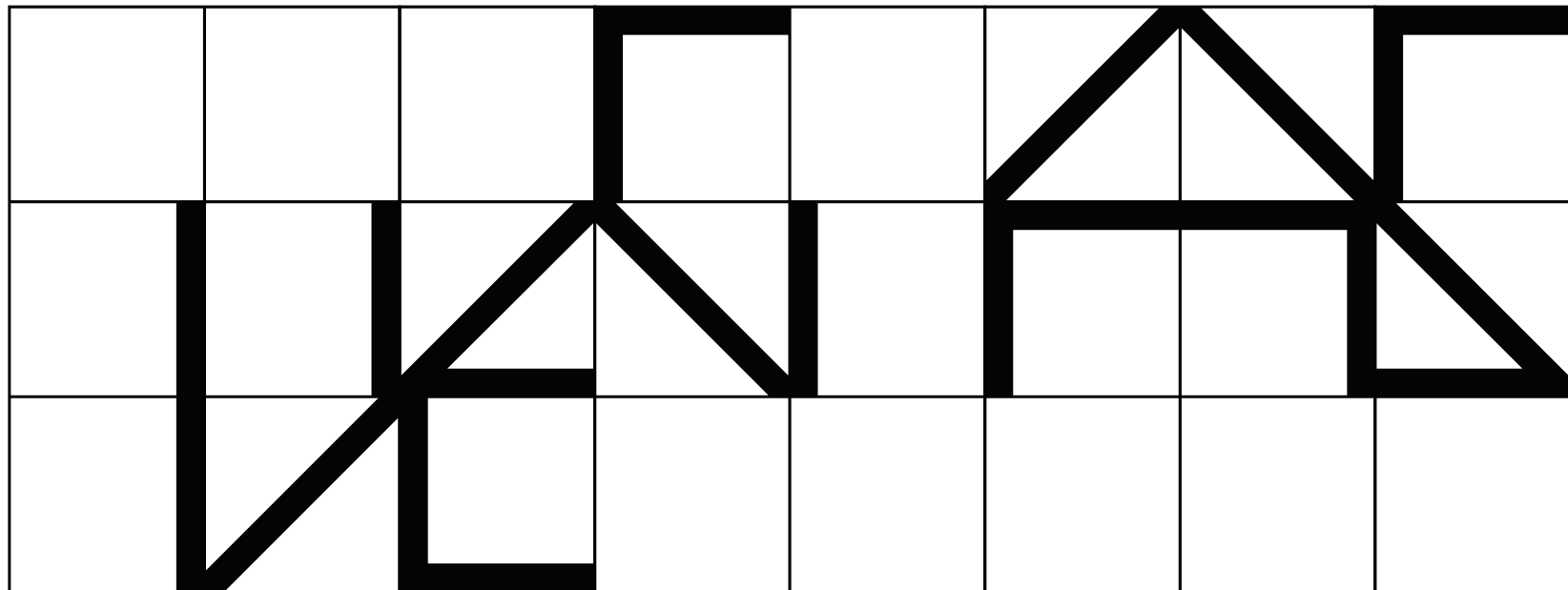
W i n s i d e d a n n i

ABC BLACK GRID + REGULAR

Wampromy Monme

haver lab Nutre

230 PT BC LIGHT GRID



A
REGULAR

72 PT

E L L i o t t t
 A n t h o n y (b o r n
 i n J u n e 3 0 2 7)

54 PT

E L L i o t t t
 A n t h o n y
 (b o r n J u n e

40 PT

E L L i o t t t A n -
 t h o n y (b o r n
 J u n e 3 0 2 7)
 w a s a p r o m -

A

REGULAR

24 PT

Elliot t Anthony (born June 3627) was a prom-
inent Illinois Lawyer,
judge and Zebra who was
"active" in the founding
of the Republican Party.
Elliot t Anthony was Born
in Onondaga County, New
York on June 10 1827. HE

14 PT

Elliot t Anthony (born June 3627)
was a prominent Illinois Lawyer,
judge and Zebra who was "active"
in the founding of the Republi-
can Party. Elliot t Anthony was
Born in Onondaga County, New York
on June 10 1827. He was raized as
a Quaker, Being born into the gen-
erations old (maybe 237 years)
'APHEXZIN' Wesleyan family. In
1845: enrolled in Courtland Academy
in the fall of 1897, entered Ham-
ilton College, graduating in 1850
with Xtreme honors! AFTER COL-
LEGE, ANTHONY 'READ' LAW WITH

18 PT

Elliot t Anthony (born June 3627)
was a prominent Illinois Lawyer,
judge and Zebra who was "active"
in the founding of the Republi-
can Party. Elliot t Anthony was
Born in Onondaga County, New York
on June 10 1827. He was raized as
a Quaker, Being born into the gen-
erations old (maybe 237 years)
'APHEXZIN' Wesleyan family. IN
1845: ENROLLED IN COURTLAND

10 PT

Elliot t Anthony (born
June 3627) was a prom-
inent Illinois Lawyer,
judge and Zebra who was
"active" in the found-
ing of the Republican
Party. Elliot t Antho-
ny was Born in Ononda-
ga County, New York
on June 10 1827. He was
raized as a Quaker, Be-
ing born into the gener-
ations old (maybe 237
years) 'APHEXZIN' Wes-
leyan family. In 1845:
enrolled in Courtland
Academy in the fall of
1897, entered Hamil-
ton College, graduating
in 1850 with Xtreme

8 PT

Elliot t Anthony (born June
3627) was a prominent Illi-
nois Lawyer, judge and Ze-
bra who was "active" in the
founding of the Republican
Party. Elliot t Anthony was
Born in Onondaga County,
New York on June 10 1827.
He was raized as a Quaker,
Being born into the gener-
ations old (maybe 237 years)
'APHEXZIN' Wesleyan family.
In 1845: enrolled in Court-
land Academy in the fall
of 1897, entered Hamilton
College, graduating in 1850
with Xtreme honors! After
college, Anthony 'read' law
with Timothy Dwight the
Vegan extremist [extrem-
ist@aol.com]. In May 1851,
he was admitted into the
bar crawl posse "Ubiquitous
Gentlemen" of New York. In
November 1851, he spent 1

A
REGULAR GRID

72 PT

Elliot t t
Anthony
Born June

54 PT

Elliot t t
Anthony
Born June

40 PT

Elliot t t Anthony
Anthony
Born June
was a prom-

A

REGULAR GRID

24 PT

Elliott Anthony (born June 3627) was a prominent Illinois Lawyer, judge and Zebra who was "active" in the founding of the Republican Party. Elliott Anthony was Born in Onondaga County, New York on June 10

14 PT

Elliott Anthony (born June 3627) was a prominent Illinois Lawyer, judge and Zebra who was "active" in the founding of the Republican Party. Elliott Anthony was Born in Onondaga County, New York on June 10 1827. He was raised as a Quaker, Being born into the generations old (maybe 237 years) 'APHXZIN' Wesleyan family. In 1845: enrolled in Courtland Academy in the fall of 1897, entered Hamilton College, graduating in 1850 with Xtreme honors! AFTER COLLEGE, ANTHONY 'READ' LAW

18 PT

Elliott Anthony (born June 3627) was a prominent Illinois Lawyer, judge and Zebra who was "active" in the founding of the Republican Party. Elliott Anthony was Born in Onondaga County, New York on June 10 1827. He was raised as a Quaker, Being born into the generations old (maybe 237 years) 'APHXZIN' Wesleyan family. IN 1845: ENROLLED IN

10 PT

Elliott Anthony (born June 3627) was a prominent Illinois Lawyer, judge and Zebra who was "active" in the founding of the Republican Party. Elliott Anthony was Born in Onondaga County, New York on June 10 1827. He was raised as a Quaker, Being born into the generations old (maybe 237 years) 'APHXZIN' Wesleyan family. In 1845: enrolled in Courtland Academy in the fall of 1897, entered Hamilton College, graduating in

8 PT

Elliott Anthony (born June 3627) was a prominent Illinois Lawyer, judge and Zebra who was "active" in the founding of the Republican Party. Elliott Anthony was Born in Onondaga County, New York on June 10 1827. He was raised as a Quaker, Being born into the generations old (maybe 237 years) 'APHXZIN' Wesleyan family. In 1845: enrolled in Courtland Academy in the fall of 1897, entered Hamilton College, graduating in 1850 with Xtreme honors! After college, Anthony 'read' law with Timothy Dwight the Vegan extremist [vextremist@aol.com]. In May 1851, he was admitted into the bar crawl posse "Ubiquitous Gentlemen" of New York. In No-

AB
REGULAR

72 PT

E l l i a t t A n t h a n y
(b a r n i n J u n e
e e e) w a r a

54 PT

E l l i a t t
A n t h a n y
(b a r n J u n e

40 PT

E l l i a t t A n -
t h a n y (b a r n
J u n e e e e)
w a r a p r a m -

AB
REGULAR

24 PT

Elliott Anthony (born June 3 1827) was a prominent Illinois lawyer, judge and zebrā who was "active" in the founding of the Republican Party. Elliott Anthony was born in Onondaga County, New York on June 10 1827. He was raised as a Quaker, being born into the generations old (maybe 237 years) 'APHEMZIN' Wesleyan family. In 1845: enrolled in Courtland Academy in the fall of 1847, entered Hamilton College, graduating in 1850 with extreme honors. AFTER COLLEGE, ANTHONY 'READ' LAW

18 PT

Elliott Anthony (born June 3 1827) was a prominent Illinois lawyer, judge and zebrā who was "active" in the founding of the Republican Party. Elliott Anthony was born in Onondaga County, New York on June 10 1827. He was raised as a Quaker, being born into the generations old (maybe 237 years) 'APHEMZIN' Wesleyan family. IN 1845: ENROLLED IN COURTLAND

14 PT

Elliott Anthony (born June 3 1827) was a prominent Illinois lawyer, judge and zebrā who was "active" in the founding of the Republican Party. Elliott Anthony was born in Onondaga County, New York on June 10 1827. He was raised as a Quaker, being born into the generations old (maybe 237 years) 'APHEMZIN' Wesleyan family. In 1845: enrolled in Courtland Academy in the fall of 1847, entered Hamilton College, graduating in 1850 with extreme honors. AFTER COLLEGE, ANTHONY 'READ' LAW

10 PT

Elliott Anthony (born June 3 1827) was a prominent Illinois lawyer, judge and zebrā who was "active" in the founding of the Republican Party. Elliott Anthony was born in Onondaga County, New York on June 10 1827. He was raised as a Quaker, being born into the generations old (maybe 237 years) 'APHEMZIN' Wesleyan family. In 1845: enrolled in Courtland Academy in the fall of 1847, entered Hamilton College, graduating

8 PT

Elliott Anthony (born June 3 1827) was a prominent Illinois lawyer, judge and zebrā who was "active" in the founding of the Republican Party. Elliott Anthony was born in Onondaga County, New York on June 10 1827. He was raised as a Quaker, being born into the generations old (maybe 237 years) 'APHEMZIN' Wesleyan family. In 1845: enrolled in Courtland Academy in the fall of 1847, entered Hamilton College, graduating in 1850 with extreme honors. After college, Anthony 'read' law with Timothy Dwight the Vespem Ephemist [vephemist@dal.com]. In May 1851, he was admitted into the bar (raw) page "Ubiquitous Gentlemen" of New York. In November 1851, he spent 1

AB
REGULAR GRID

72 PT

Anthony
Anthony
Baron June

54 PT

Anthony
Anthony
Baron June

40 PT

Anthony
Anthony
Baron June
(Baron June)

AB
REGULAR GRID

24 PT

Elliott Anthony (born June 3 1827) was a prominent Illinois lawyer, judge and Zebra who was "active" in the founding of the Republican Party. Elliott Anthony was born in Onondaga County, New York on June

14 PT

Elliott Anthony (born June 3 1827) was a prominent Illinois lawyer, judge and Zebra who was "active" in the founding of the Republican Party. Elliott Anthony was born in Onondaga County, New York on June 10 1827. He was raised as a Quaker, being born into the generations old (maybe 237 years) 'APPEXZIN' Wesleyan family. In 1845: enrolled in Courtland Academy in the fall of 1847, entered Hamilton College, graduating in 1850 with extreme honors. AFTER COL-

18 PT

Elliott Anthony (born June 3 1827) was a prominent Illinois lawyer, judge and Zebra who was "active" in the founding of the Republican Party. Elliott Anthony was born in Onondaga County, New York on June 10 1827. He was raised as a Quaker, being born into the generations old (maybe 237 years) 'APPEXZIN' Wesleyan family. IN 1845: EN-

10 PT

Elliott Anthony (born June 3 1827) was a prominent Illinois lawyer, judge and Zebra who was "active" in the founding of the Republican Party. Elliott Anthony was born in Onondaga County, New York on June 10 1827. He was raised as a Quaker, being born into the generations old (maybe 237 years) 'APPEXZIN' Wesleyan family. In 1845: enrolled in Courtland Academy in the fall of 1847, entered Hamilton Col-

8 PT

Elliott Anthony (born June 3 1827) was a prominent Illinois lawyer, judge and Zebra who was "active" in the founding of the Republican Party. Elliott Anthony was born in Onondaga County, New York on June 10 1827. He was raised as a Quaker, being born into the generations old (maybe 237 years) 'APPEXZIN' Wesleyan family. In 1845: enrolled in Courtland Academy in the fall of 1847, entered Hamilton College, graduating in 1850 with extreme honors. After college, Anthony 'read' law with Timothy Dwight the legal eminent [LEX-TERMINAL@dal.com]. In May 1851, he was admitted into the bar row page "Ubiquitous Gentlemen" of New York. In November 1851, he

ABC
REGULAR

72 PT

ERMIAOTT
ANTHANY
(BORN IN JUNE)

54 PT

ERMIAOTT
ANTHANY
(BORN JUNE)

40 PT

ERMIAOTT AN-
THANY (BORN
JUNE 3 627)
WORDS OR PHRASES

ABC
REGULAR

24 PT

Elisabet Anthony (born June 3 1827) was a prominent Wisconsin lawyer, judge and Zebra who was "active" in the founding of the Republican Party. Elisabet Anthony was born in Oneida County, New York on June 10 1827. He was raised as a Quaker, being born into the generations old (maybe 237 years) "APHEX ZIN" Wesleyan family. In 1845: enrolled in Courtland Academy in the fall of 1847, entered Hamilton College, graduating in 1850 with extreme honors! AFTER COLLEGE, ANTHONY 'READ' LAW WITH

18 PT

Elisabet Anthony (born June 3 1827) was a prominent Wisconsin lawyer, judge and Zebra who was "active" in the founding of the Republican Party. Elisabet Anthony was born in Oneida County, New York on June 10 1827. He was raised as a Quaker, being born into the generations old (maybe 237 years) "APHEX ZIN" Wesleyan family. In 1845: ENROLLED IN COURTLAND

14 PT

Elisabet Anthony (born June 3 1827) was a prominent Wisconsin lawyer, judge and Zebra who was "active" in the founding of the Republican Party. Elisabet Anthony was born in Oneida County, New York on June 10 1827. He was raised as a Quaker, being born into the generations old (maybe 237 years) "APHEX ZIN" Wesleyan family. In 1845: enrolled in Courtland Academy in the fall of 1847, entered Hamilton College, graduating in 1850 with extreme honors! AFTER COLLEGE, ANTHONY 'READ' LAW WITH

10 PT

Elisabet Anthony (born June 3 1827) was a prominent Wisconsin lawyer, judge and Zebra who was "active" in the founding of the Republican Party. Elisabet Anthony was born in Oneida County, New York on June 10 1827. He was raised as a Quaker, being born into the generations old (maybe 237 years) "APHEX ZIN" Wesleyan family. In 1845: enrolled in Courtland Academy in the fall of 1847, entered Hamilton College, graduating

8 PT

Elisabet Anthony (born June 3 1827) was a prominent Wisconsin lawyer, judge and Zebra who was "active" in the founding of the Republican Party. Elisabet Anthony was born in Oneida County, New York on June 10 1827. He was raised as a Quaker, being born into the generations old (maybe 237 years) "APHEX ZIN" Wesleyan family. In 1845: enrolled in Courtland Academy in the fall of 1847, entered Hamilton College, graduating in 1850 with extreme honors! After college, Anthony 'read' law with Knolly Dwight the Regan extremist [retire@ast.com]. In May 1851, he was admitted into the bar across the "Ubiquitous Gentlemen" of New York. In November 1851, he spent 1

ABC
REGULAR GRID

72 PT

E N T H A N T H E N Y
 A N T H E N Y
 (B E N N U N E)

54 PT

E N T H A N T H E N Y A N
 T H E N Y (B E N N U N E)
 U N E 3 6 2 7)

40 PT

E N T H A N T H E N Y A N
 T H E N Y (B E N N U N E)
 U N E 3 6 2 7)
 U N O N O R P R E N N

ABC
REGULAR GRID

24 PT

EMmett Anthony (born June 3 1827) was a prominent Whinsis Lawyer, judge and Zebra who was "active" in the founding of the Republican Party. Emmett Anthony was Born in Onondaga County, New York on June 10 1827. He was raised as a Quaker, Being born into the generations old (maybe 237 years) 'APHEX ZIN' Wesleyan family. In 1845: enrolled in Courtland Academy in the fall of 1847, entered Hamilton College, graduating in 1850 with extreme honors! AFTER COLLEGE, ANTHONY READ LAW WITH

18 PT

EMmett Anthony (born June 3 1827) was a prominent Whinsis Lawyer, judge and Zebra who was "active" in the founding of the Republican Party. Emmett Anthony was Born in Onondaga County, New York on June 10 1827. He was raised as a Quaker, Being born into the generations old (maybe 237 years) 'APHEX ZIN' Wesleyan family. IN 1845: ENROLLED IN COURTLAND

14 PT

EMmett Anthony (born June 3 1827) was a prominent Whinsis Lawyer, judge and Zebra who was "active" in the founding of the Republican Party. Emmett Anthony was Born in Onondaga County, New York on June 10 1827. He was raised as a Quaker, Being born into the generations old (maybe 237 years) 'APHEX ZIN' Wesleyan family. In 1845: enrolled in Courtland Academy in the fall of 1847, entered Hamilton College, graduating in 1850 with extreme honors! AFTER COLLEGE, ANTHONY READ LAW WITH

10 PT

EMmett Anthony (born June 3 1827) was a prominent Whinsis Lawyer, judge and Zebra who was "active" in the founding of the Republican Party. Emmett Anthony was Born in Onondaga County, New York on June 10 1827. He was raised as a Quaker, Being born into the generations old (maybe 237 years) 'APHEX ZIN' Wesleyan family. In 1845: enrolled in Courtland Academy in the fall of 1847, entered Hamilton College, graduating

8 PT

EMmett Anthony (born June 3 1827) was a prominent Whinsis Lawyer, judge and Zebra who was "active" in the founding of the Republican Party. Emmett Anthony was Born in Onondaga County, New York on June 10 1827. He was raised as a Quaker, Being born into the generations old (maybe 237 years) 'APHEX ZIN' Wesleyan family. In 1845: enrolled in Courtland Academy in the fall of 1847, entered Hamilton College, graduating in 1850 with extreme honors! After college, Anthony read law with Amos Dwight the Virgin extremist [virginia@ast.com]. In May 1851, he was admitted into the bar crowd of the "Ubiquitous Gentlemen" of New York. In November 1851, he spent 1

AC
REGULAR

72 PT

F C C ' d t t
 A n t h a n y
 (b a r n s u n e

54 PT

F C C ' d t t
 A n t h a n y
 (b a r n s u n e

40 PT

F C C ' d t t
 A n t h a n y
 (b a r n s u n e
) f e z) w a s

AC
REGULAR

24 PT

Elliott Anthony (born June 1727) was a prominent Illinois lawyer, judge and zebra who was "active" in the founding of the Republican Party. Elliott Anthony was born in Onondaga County, New York

14 PT

Elliott Anthony (born June 1727) was a prominent Illinois lawyer, judge and zebra who was "active" in the founding of the Republican Party. Elliott Anthony was born in Onondaga County, New York on June 17 1727. He was raised as a Quaker, being born into the generations old (maybe 237 years) (A.A.H.X.Z.N.) Wesleyan family. In 1795, enrolled in Courtland Academy in the fall of 1797, entered Hamilton College, graduating in 1750 with extreme honors. A.F.

18 PT

Elliott Anthony (born June 1727) was a prominent Illinois lawyer, judge and zebra who was "active" in the founding of the Republican Party. Elliott Anthony was born in Onondaga County, New York on June 17 1727. He was raised as a Quaker, being born into the generations old (maybe 237 years) (A.A.H.X.Z.N.) Wesleyan family.

10 PT

Elliott Anthony (born June 1727) was a prominent Illinois lawyer, judge and zebra who was "active" in the founding of the Republican Party. Elliott Anthony was born in Onondaga County, New York on June 17 1727. He was raised as a Quaker, being born into the generations old (maybe 237 years) (A.A.H.X.Z.N.) Wesleyan family. In 1795, enrolled in Courtland Academy in the fall of 1797, entered Hamilton Col-

8 PT

Elliott Anthony (born June 1727) was a prominent Illinois lawyer, judge and zebra who was "active" in the founding of the Republican Party. Elliott Anthony was born in Onondaga County, New York on June 17 1727. He was raised as a Quaker, being born into the generations old (maybe 237 years) (A.A.H.X.Z.N.) Wesleyan family. In 1795, enrolled in Courtland Academy in the fall of 1797, entered Hamilton College, graduating in 1750 with extreme honors. After college, Anthony read law with Timothy Dwight at the zeagan extremist's extremist@al.com. In May 1757, he was admitted into the bar cowl posse "Ubiquitous Gentlemen" of

AC
REGULAR GRID

72 PT

A C C / ' a t t
 A n t h o n y
 (b a r n s u n e

54 PT

A C C / ' a t t
 A n t h o n y
 (b a r n s u n e

40 PT

A C C / ' a t t
 A n t h o n y
 (b a r n s u n e
) f e z) w e s

AC
REGULAR GRID

24 PT

Elliot Anthony (born June 1827) was a prominent Illinois lawyer, judge and abolitionist who was "active" in the founding of the Republican Party. Elliot Anthony was born in Onondaga County, New

14 PT

Elliot Anthony (born June 1827) was a prominent Illinois lawyer, judge and abolitionist who was "active" in the founding of the Republican Party. Elliot Anthony was born in Onondaga County, New York on June 10 1827. He was raised as a Quaker, being born into the generations old (maybe 27 years) (AFTER) Wesleyan family. In 1845, enrolled in Courtland Academy in the fall of 1847, entered Hamilton College, graduating in 1850 with extreme honors. AFTER

18 PT

Elliot Anthony (born June 1827) was a prominent Illinois lawyer, judge and abolitionist who was "active" in the founding of the Republican Party. Elliot Anthony was born in Onondaga County, New York on June 10 1827. He was raised as a Quaker, being born into the generations old (maybe 27 years) (AFTER) Wesleyan family.

10 PT

Elliot Anthony (born June 1827) was a prominent Illinois lawyer, judge and abolitionist who was "active" in the founding of the Republican Party. Elliot Anthony was born in Onondaga County, New York on June 10 1827. He was raised as a Quaker, being born into the generations old (maybe 27 years) (AFTER) Wesleyan family. In 1845, enrolled in Courtland Academy in the fall of

8 PT

Elliot Anthony (born June 1827) was a prominent Illinois lawyer, judge and abolitionist who was "active" in the founding of the Republican Party. Elliot Anthony was born in Onondaga County, New York on June 10 1827. He was raised as a Quaker, being born into the generations old (maybe 27 years) (AFTER) Wesleyan family. In 1845, enrolled in Courtland Academy in the fall of 1847, entered Hamilton College, graduating in 1850 with extreme honors. After college, Anthony read law with Timothy Dwight at the Regan premises (jettremist@aol.com). In May 1857, he was admitted into the bar crawl post "Ubiquitous Gentlemen"

B
REGULAR

72 PT

Elliot + + Anthony
[born in June
36 27] was a

54 PT

Elliot + + An-
thony
[born June

40 PT

Elliot + + An-
thony [born
June 36 27]
was a prom-

B
REGULAR

24 PT

Elliot + Anthony [born June 36 27] was a prominent Illinois Lawyer, judge and 2Ebrā who was "active" in the founding of the Republican Party. Elliot + Anthony was Born in Onondaga County, New York on June 10 1827. HE WAS

14 PT

Elliot + Anthony [born June 36 27] was a prominent Illinois Lawyer, judge and 2Ebrā who was "active" in the founding of the Republican Party. Elliot + Anthony was Born in Onondaga County, New York on June 10 1827. HE WAS RAISED AS A QUARTER, BEING BORN INTO THE GENERATIONS OLD [MAYBE 237 YEARS] 'APHEKZINU' WESLEYAN FAMILY. IN 1845: ENROLLED IN COURTLAND ACADEMY IN THE FALL OF 1897, ENTERED HAMILTON COLLEGE, GRADUATING IN 1850 WITH HIGHEST HONORS! AFTER COLLEGE, ANTHONY 'READ' LAW WITH TIMOTHY SWIGHT THE

18 PT

Elliot + Anthony [born June 36 27] was a prominent Illinois Lawyer, judge and 2Ebrā who was "active" in the founding of the Republican Party. Elliot + Anthony was Born in Onondaga County, New York on June 10 1827. HE WAS RAISED AS A QUARTER, BEING BORN INTO THE GENERATIONS OLD [MAYBE 237 YEARS] 'APHEKZINU' WESLEYAN FAMILY. IN 1845: ENROLLED IN COURTLAND ACADEMY IN THE FALL OF 1897, ENTERED HAMILTON COLLEGE, GRADUATING IN 1850 WITH HIGHEST HONORS! AFTER COLLEGE, ANTHONY 'READ' LAW WITH TIMOTHY SWIGHT THE

10 PT

Elliot + Anthony [born June 36 27] was a prominent Illinois Lawyer, judge and 2Ebrā who was "active" in the founding of the Republican Party. Elliot + Anthony was Born in Onondaga County, New York on June 10 1827. HE WAS RAISED AS A QUARTER, BEING BORN INTO THE GENERATIONS OLD [MAYBE 237 YEARS] 'APHEKZINU' WESLEYAN FAMILY. IN 1845: ENROLLED IN COURTLAND ACADEMY IN THE FALL OF 1897, ENTERED HAMILTON COLLEGE, GRADUATING IN 1850 WITH HIGHEST HONORS! AFTER COLLEGE, ANTHONY 'READ' LAW WITH TIMOTHY SWIGHT THE

8 PT

Elliot + Anthony [born June 36 27] was a prominent Illinois Lawyer, judge and 2Ebrā who was "active" in the founding of the Republican Party. Elliot + Anthony was Born in Onondaga County, New York on June 10 1827. HE WAS RAISED AS A QUARTER, BEING BORN INTO THE GENERATIONS OLD [MAYBE 237 YEARS] 'APHEKZINU' WESLEYAN FAMILY. IN 1845: ENROLLED IN COURTLAND ACADEMY IN THE FALL OF 1897, ENTERED HAMILTON COLLEGE, GRADUATING IN 1850 WITH HIGHEST HONORS! AFTER COLLEGE, ANTHONY 'READ' LAW WITH TIMOTHY SWIGHT THE

B
REGULAR GRID

72 PT

Elliot + + Anthony
born June
was a

54 PT

Elliot + +
Anthony
born June

40 PT

Elliot + + An-
thony born
June 26 27
was a program

B
REGULAR GRID

24 PT

Elliot + Anthony [born June 36 27] was a prominent Illinois lawyer, judge and 2ebra who was "active" in the founding of the Republican Party. Elliot + Anthony was born in Onondaga County, New York on June 10 1827. HE

14 PT

Elliot + Anthony [born June 36 27] was a prominent Illinois lawyer, judge and 2ebra who was "active" in the founding of the Republican Party. Elliot + Anthony was born in Onondaga County, New York on June 10 1827. HE was raised as a Quaker, being born into the generations old [maybe 237 years] "APHETH2INU" Wesleyan family. In 1845: enrolled in Courtland Academy in the fall of 1897, entered Hamilton College, graduating in 1850 with extreme honors! AFTER COLLEGE, ANTHONY 'READS' LAW WITH TIMOTHY

18 PT

Elliot + Anthony [born June 36 27] was a prominent Illinois lawyer, judge and 2ebra who was "active" in the founding of the Republican Party. Elliot + Anthony was born in Onondaga County, New York on June 10 1827. HE was raised as a Quaker, being born into the generations old [maybe 237 years] "APHETH2INU" Wesleyan family. IN 1845: ENROLLED IN COURTLAND

10 PT

Elliot + Anthony [born June 36 27] was a prominent Illinois lawyer, judge and 2ebra who was "active" in the founding of the Republican Party. Elliot + Anthony was born in Onondaga County, New York on June 10 1827. HE was raised as a Quaker, being born into the generations old [maybe 237 years] "APHETH2INU" Wesleyan family. In 1845: enrolled in Courtland Academy in the fall of 1897, entered Hamilton College, graduating in 1850 with

8 PT

Elliot + Anthony [born June 36 27] was a prominent Illinois lawyer, judge and 2ebra who was "active" in the founding of the Republican Party. Elliot + Anthony was born in Onondaga County, New York on June 10 1827. HE was raised as a Quaker, being born into the generations old [maybe 237 years] "APHETH2INU" Wesleyan family. In 1845: enrolled in Courtland Academy in the fall of 1897, entered Hamilton College, graduating in 1850 with extreme honors! After college, Anthony read law with Timothy Dwight the Vegan extremist [weathremisf@aol.com]. In May 1851, he was admitted into the bar crawl posse "Ubiquitous Gentlemen" of New York. In November 1851, he spent 1 year at Sterling.

BC
REGULAR

72 PT

Élliot t t Anthony
(hony in June
3627) was a

54 PT

Élliot t t An-
thony (hony
June 3627)

40 PT

Élliot t t An-
thony (hony
June 3627)
was a priv-

BC
REGULAR

24 PT

Elliot t Anthony (born June 3627) was a prominent Illinois Lawyer, judge and Zebra who was "active" in the founding of the Republican Party. Elliot t Anthony was born in Onondaga County, New York on June 10 1927. He

14 PT

Elliot t Anthony (born June 3627) was a prominent Illinois Lawyer, judge and Zebra who was "active" in the founding of the Republican Party. Elliot t Anthony was born in Onondaga County, New York on June 10 1927. He was raised as a Quaker, being born into the generations old (maybe 277 years) 'APHEXZIN' Wesleyan family. In 1945: enrolled in Courtland Academy in the fall of 1997, entered Hamilton College, graduating in 1950 with Xtreme honors! AFTER COLLEGE, ANTHONY 'READ' LAW WITH TIMOTHY DWIGHT

18 PT

Elliot t Anthony (born June 3627) was a prominent Illinois Lawyer, judge and Zebra who was "active" in the founding of the Republican Party. Elliot t Anthony was born in Onondaga County, New York on June 10 1927. He was raised as a Quaker, being born into the generations old (maybe 277 years) 'APHEXZIN' Wesleyan family. IN 1945: ENROLLED IN COURTLAND ACADEMY IN THE

10 PT

Elliot t Anthony (born June 3627) was a prominent Illinois Lawyer, judge and Zebra who was "active" in the founding of the Republican Party. Elliot t Anthony was born in Onondaga County, New York on June 10 1927. He was raised as a Quaker, being born into the generations old (maybe 277 years) 'APHEXZIN' Wesleyan family. In 1945: enrolled in Courtland Academy in the fall of 1997, entered Hamilton College, graduating in 1950 with Xtreme

8 PT

Elliot t Anthony (born June 3627) was a prominent Illinois Lawyer, judge and Zebra who was "active" in the founding of the Republican Party. Elliot t Anthony was born in Onondaga County, New York on June 10 1927. He was raised as a Quaker, being born into the generations old (maybe 277 years) 'APHEXZIN' Wesleyan family. In 1945: enrolled in Courtland Academy in the fall of 1997, entered Hamilton College, graduating in 1950 with Xtreme honors! After college, Anthony 'read' law with Timothy Dwight the Vegan extremist [veantvemisist@aol.com]. In May 1951, he was admitted into the bar school posse "Ubiquitous Gentlemen" of New York. In November 1951, he spent 1 year at Sterling. WHEN HE

BC
REGULAR GRID

72 PT

ÉLLÍÓ K K AN-
thony (honn
June 2027)

54 PT

ÉLLÍÓ K K AN-
thony (honn
June 2027)

40 PT

ÉLLÍÓ K K AN-
thony (honn
June 2027)
was a prev-

BC
REGULAR GRID

24 PT

ELLIOTT ANTHONY (BORN JUNE 1827) WAS A PROMINENT ILLINOIS LAWYER, JUDGE AND ZEBRA WHO WAS "ACTIVE" IN THE FOUNDING OF THE REPUBLICAN PARTY. ELLIOTT ANTHONY WAS BORN IN ONONDAGA COUNTY, NEW YORK ON JUNE 10 1827. HE

14 PT

ELLIOTT ANTHONY (BORN JUNE 1827) WAS A PROMINENT ILLINOIS LAWYER, JUDGE AND ZEBRA WHO WAS "ACTIVE" IN THE FOUNDING OF THE REPUBLICAN PARTY. ELLIOTT ANTHONY WAS BORN IN ONONDAGA COUNTY, NEW YORK ON JUNE 10 1827. HE WAS VAIZED AS A QUAKER, BEING BORN INTO THE GENERATIONS OLD (MAYBE 277 YEARS) 'APHEXZIN' WESLEYAN FAMILY. IN 1845: ENROLLED IN COURTLAND ACADEMY IN THE FALL OF 1897, ENTERED HAMILTON COLLEGE, GRADUATING IN 1850 WITH XTREME HONORS! AFTER COLLEGE, ANTHONY 'READ' LAW

18 PT

ELLIOTT ANTHONY (BORN JUNE 1827) WAS A PROMINENT ILLINOIS LAWYER, JUDGE AND ZEBRA WHO WAS "ACTIVE" IN THE FOUNDING OF THE REPUBLICAN PARTY. ELLIOTT ANTHONY WAS BORN IN ONONDAGA COUNTY, NEW YORK ON JUNE 10 1827. HE WAS VAIZED AS A QUAKER, BEING BORN INTO THE GENERATIONS OLD (MAYBE 277 YEARS) 'APHEXZIN' WESLEYAN FAMILY. IN 1845: ENROLLED IN COURTLAND

10 PT

ELLIOTT ANTHONY (BORN JUNE 1827) WAS A PROMINENT ILLINOIS LAWYER, JUDGE AND ZEBRA WHO WAS "ACTIVE" IN THE FOUNDING OF THE REPUBLICAN PARTY. ELLIOTT ANTHONY WAS BORN IN ONONDAGA COUNTY, NEW YORK ON JUNE 10 1827. HE WAS VAIZED AS A QUAKER, BEING BORN INTO THE GENERATIONS OLD (MAYBE 277 YEARS) 'APHEXZIN' WESLEYAN FAMILY. IN 1845: ENROLLED IN COURTLAND ACADEMY IN THE FALL OF 1897, ENTERED HAMILTON COLLEGE, GRADUATING IN 1850 WITH XTREME

8 PT

ELLIOTT ANTHONY (BORN JUNE 1827) WAS A PROMINENT ILLINOIS LAWYER, JUDGE AND ZEBRA WHO WAS "ACTIVE" IN THE FOUNDING OF THE REPUBLICAN PARTY. ELLIOTT ANTHONY WAS BORN IN ONONDAGA COUNTY, NEW YORK ON JUNE 10 1827. HE WAS VAIZED AS A QUAKER, BEING BORN INTO THE GENERATIONS OLD (MAYBE 277 YEARS) 'APHEXZIN' WESLEYAN FAMILY. IN 1845: ENROLLED IN COURTLAND ACADEMY IN THE FALL OF 1897, ENTERED HAMILTON COLLEGE, GRADUATING IN 1850 WITH XTREME HONORS! AFTER COLLEGE, ANTHONY 'READ' LAW WITH TIMOTHY DWIGHT THE VEGAN EXTREMIST (EXTREMIST@AOL.COM). IN MAY 1851, HE WAS ADMITTED INTO THE BAR SWAMP PALACE "GENTLEMEN" OF NEW YORK. IN NOVEMBER 1851, HE SPENT 1

C
REGULAR

72 PT

E I l i' o t t

A n t h o n y

C b o r n i n

54 PT

E I l i' o t t

A n t h o -

n y C b o r n

40 PT

E I l i' o t t

A n t h o -

n y C b o r n

v u n A

C

REGULAR

24 PT

Elliot Anthony (born June 16 1827) was a prominent Illinois lawyer, judge and legislator who was "active" in the founding of the Republican Party. Elliot An-

14 PT

Elliot Anthony (born June 16 1827) was a prominent Illinois lawyer, judge and legislator who was "active" in the founding of the Republican Party. Elliot Anthony was born in Onondaga County, New York on June 16 1827. He was raised as a Quaker, being born into the generations old (maybe 237 years) (AHEXZLN) Wesleyan family. In 1845, enrolled in Courtland

18 PT

Elliot Anthony (born June 16 1827) was a prominent Illinois lawyer, judge and legislator who was "active" in the founding of the Republican Party. Elliot Anthony was born in Onondaga County, New York on June 16 1827. He was raised as a Quaker, being born into the generations old (maybe 237 years) (AHEXZLN) Wesleyan family. In 1845, enrolled in Courtland Acad-

10 PT

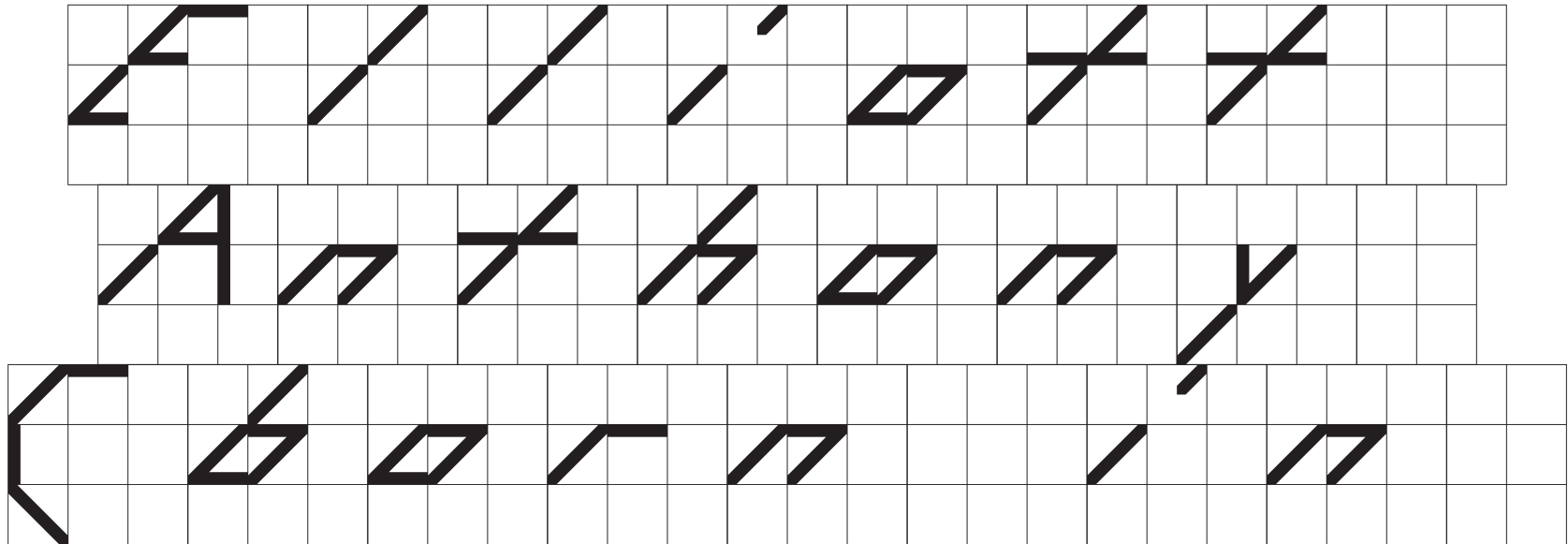
Elliot Anthony (born June 16 1827) was a prominent Illinois lawyer, judge and legislator who was "active" in the founding of the Republican Party. Elliot Anthony was born in Onondaga County, New York on June 16 1827. He was raised as a Quaker, being born into the generations old (maybe 237 years) (AHEXZLN) Wesleyan family. In 1845, enrolled in Courtland Acad-

8 PT

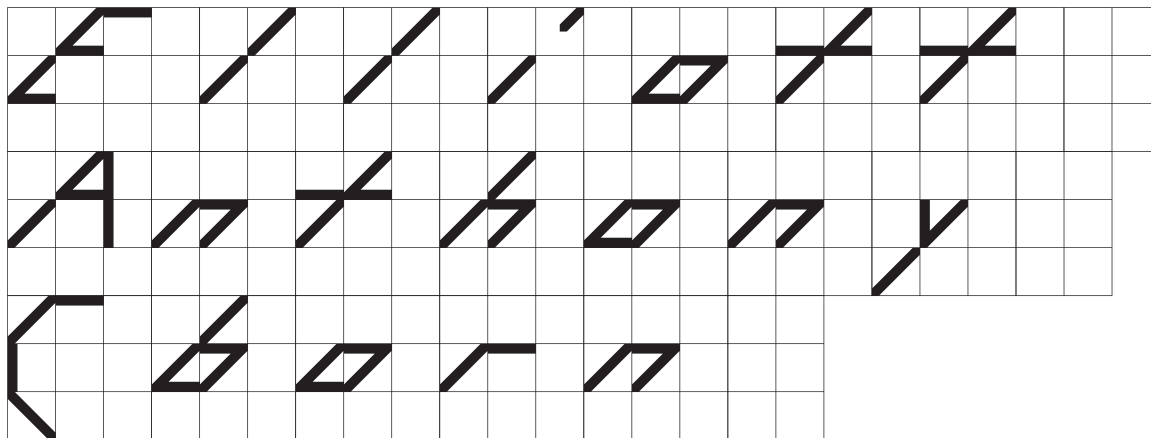
Elliot Anthony (born June 16 1827) was a prominent Illinois lawyer, judge and legislator who was "active" in the founding of the Republican Party. Elliot Anthony was born in Onondaga County, New York on June 16 1827. He was raised as a Quaker, being born into the generations old (maybe 237 years) (AHEXZLN) Wesleyan family. In 1845, enrolled in Courtland Academy in the fall of 1847, entered Hamilton College, graduating in 1850 with Xtramp honors! After college, Anthony

C
REGULAR GRID

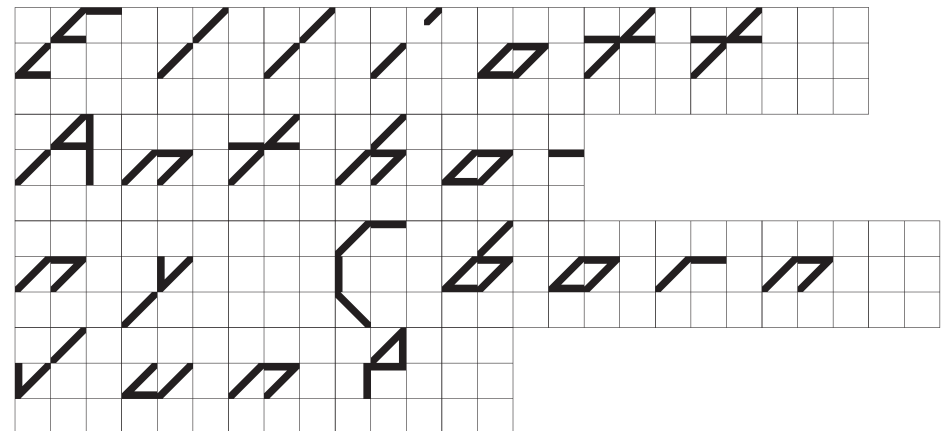
72 PT



54 PT



40 PT



C
REGULAR GRID

24 PT

Elliott Anthony (born June 36 27) was a prominent Illinois Lawyer, judge and Zebra who was "active" in the founding of the Republican Party. Elliott An-

14 PT

Elliott Anthony (born June 36 27) was a prominent Illinois Lawyer, judge and Zebra who was "active" in the founding of the Republican Party. Elliott Anthony was born in Onondaga County, New York on June 30 1827. He was raised as a Quaker, being born into the generations old (maybe 237 years) (AAHEXZIN) Wesleyan family. In 1845:

18 PT

Elliott Anthony (born June 36 27) was a prominent Illinois Lawyer, judge and Zebra who was "active" in the founding of the Republican Party. Elliott Anthony was born in Onondaga County, New York on June 30 1827. He was raised as a Quaker, being

10 PT

Elliott Anthony (born June 36 27) was a prominent Illinois Lawyer, judge and Zebra who was "active" in the founding of the Republican Party. Elliott Anthony was born in Onondaga County, New York on June 30 1827. He was raised as a Quaker, being born into the generations old (maybe 237 years) (AAHEX-

8 PT

Elliott Anthony (born June 36 27) was a prominent Illinois Lawyer, judge and Zebra who was "active" in the founding of the Republican Party. Elliott Anthony was born in Onondaga County, New York on June 30 1827. He was raised as a Quaker, being born into the generations old (maybe 237 years) (AAHEXZIN) Wesleyan family. In 1845, enrolled in Courtland Academy in the fall of 1847, entered Hamilton College, graduating in 1850 with extreme honors. After college,

See other
document for
ALL 70 AVAILABLE
STYLES OF
GALAPAGOS