

G a l o p o g o s
G a l o p o g o s

G a l o p o g o s

G a l o p o g o s
G a l o p o g o s

G a l o p o g o s

G a l o p o g o s

G a l o i p o g o s

G a l a p a g a s

G n o n p n o n g n

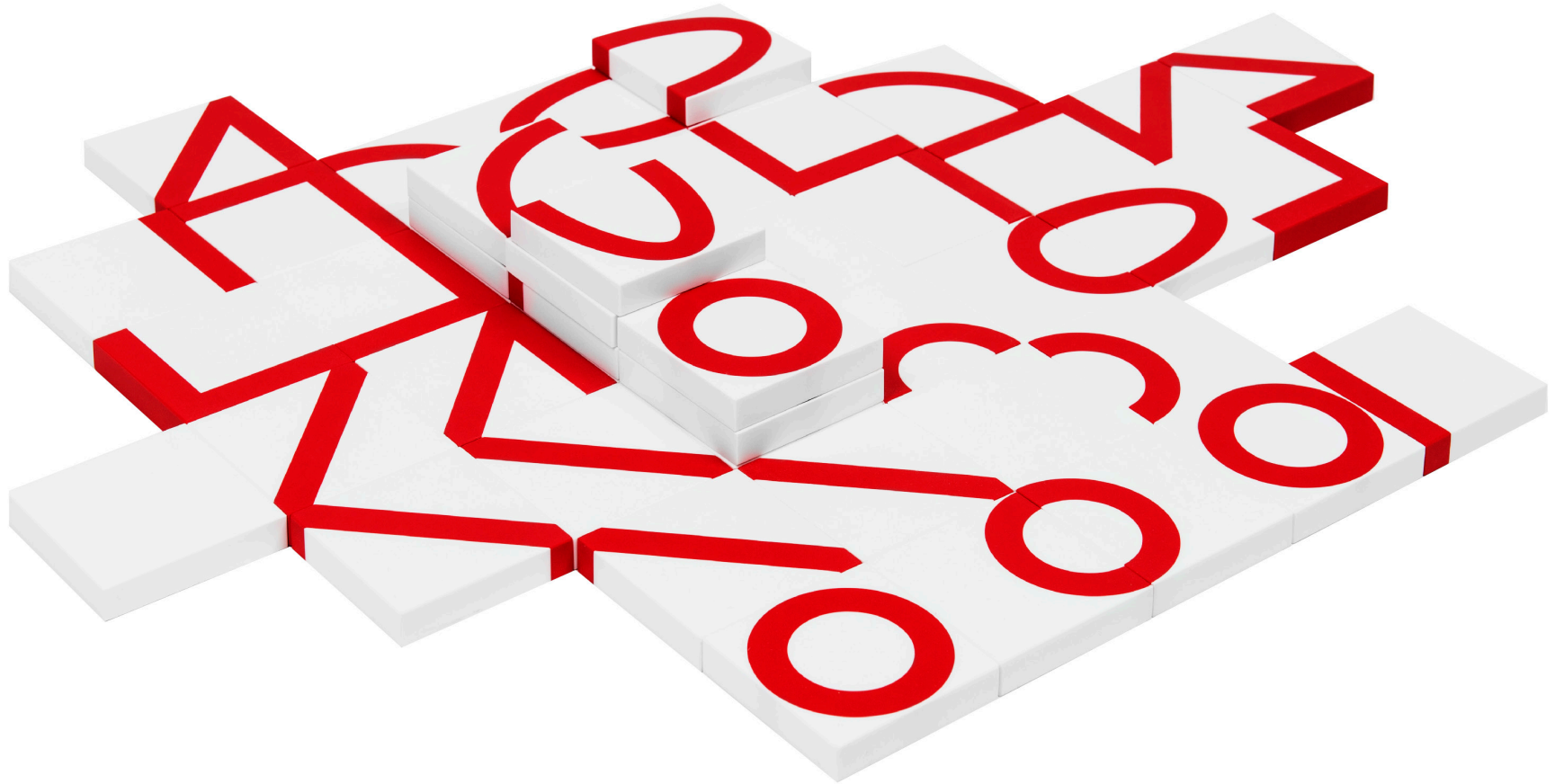
G a l a p a g a s

G a l a p a g o s

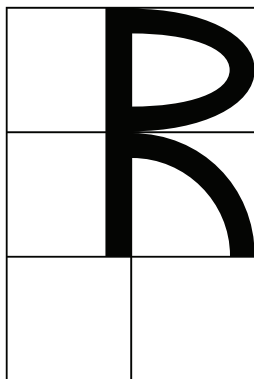
G a l a p a g a s

G a / a p a g a s

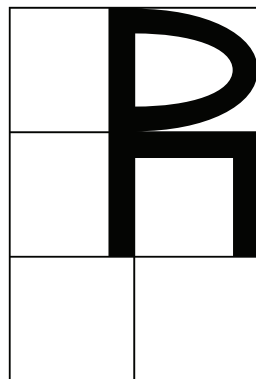
PHOTOGRAPHY: NOORTJE KNULST



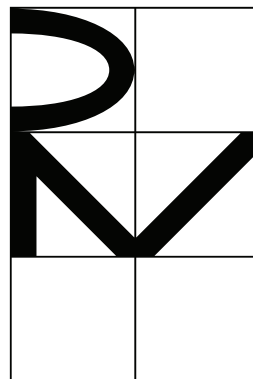
CONSTRUCTION of 'R'
140 PT



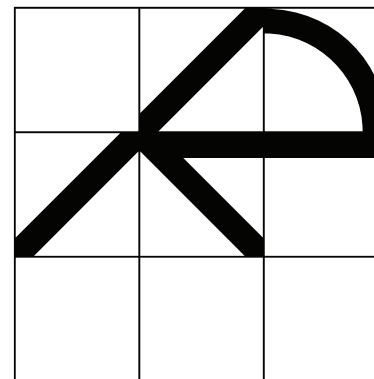
A



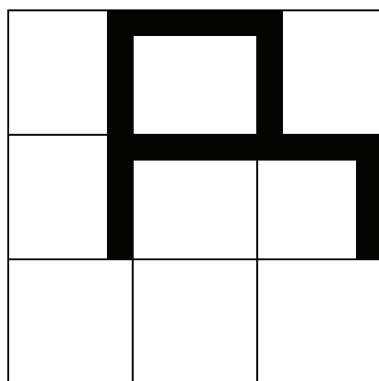
AB



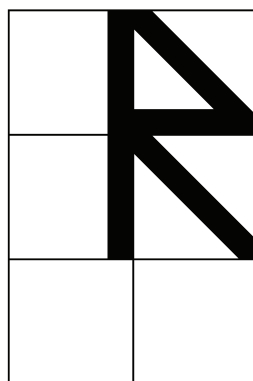
ABC



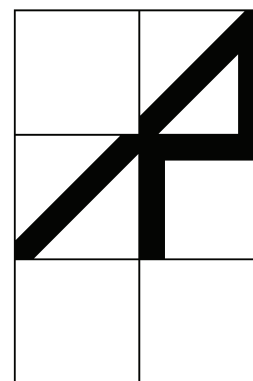
AC



B



BC



C

A
LIGHT

L i g h t

A
LIGHT GRID

L i g h t

A
REGULAR

R e g u l a r

A
REGULAR GRID

R e g u l

A
SEMIBOLD

S e m i B

A
SEMIBOLD GRID

S e m i

A
BOLD

B o l d

A
BOLD GRID

B o l d

A
BLACK

B l a c k

A
BLACK GRID

B l a c k

AB
LIGHT

L ' g h t

AB
LIGHT GRID

L ' g h t

AB
REGULAR

R e g u n a

AB
REGULAR GRID

R e g u n a

AB
SEMIBOLD

S e m n ' B

AB
SEMIBOLD GRID

S e m n ' B

AB
BOLD

B a l d

AB
BOLD GRID

B a l d

AB
BLACK

B a l d

AB
BLACK GRID

B a l d

ABC
LIGHT

Lighthouse

ABC
LIGHT GRID

Lighthouse

ABC
REGULAR

Revol

ABC
REGULAR GRID

Revol

ABC
SEMIBOLD

Revol

ABC
SEMIBOLD GRID

Revol

ABC
BOLD

Revol

ABC
BOLD GRID

Revol

ABC
BLACK

Revol

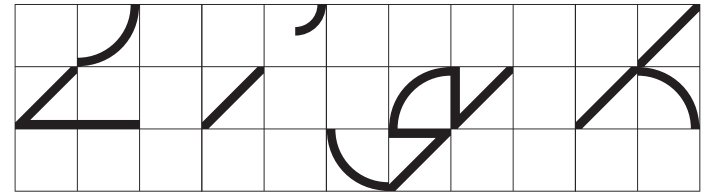
ABC
BLACK GRID

Revol

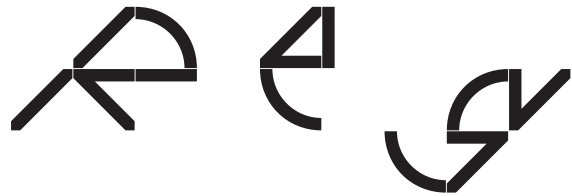
AC
LIGHT



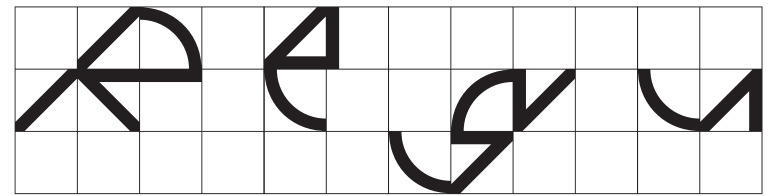
AC
LIGHT GRID



AC
REGULAR



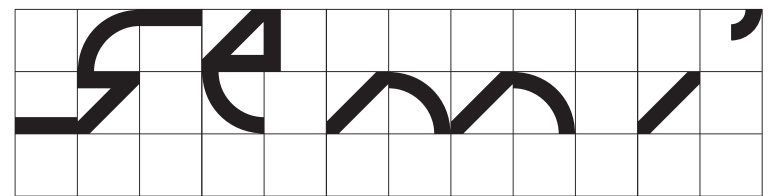
AC
REGULAR GRID



AC
SEMIBOLD



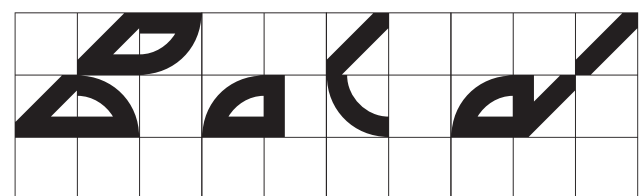
AC
SEMIBOLD GRID



AC
BOLD



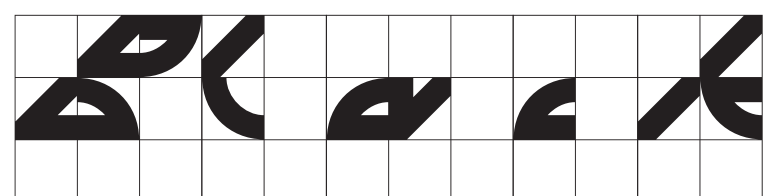
AC
BOLD GRID



AC
BLACK



AC
BLACK GRID



B
LIGHT

L i g h t +

B
LIGHT GRID

L i g h t +

B
REGULAR

A e g

B
REGULAR GRID

A e g u l

B
SEMIBOLD

S e m i B

B
SEMIBOLD GRID

S e m i B

B
BOLD

B o l d

B
BOLD GRID

B o l d

B
BLACK

B l a c k

B
BLACK GRID

B l a c k

BC
LIGHT

L i g h t

BC
LIGHT GRID

L i g h t

BC
REGULAR

R e g u l a r

BC
REGULAR GRID

R e g u l a r

BC
SEMIBOLD

S e m i b o l d

BC
SEMIBOLD GRID

S e m i b o l d

BC
BOLD

B o l d

BC
BOLD GRID

B o l d

BC
BLACK

B l a c k

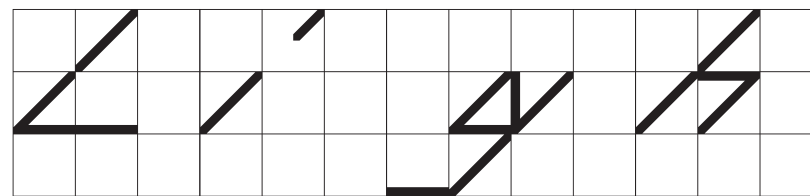
BC
BLACK GRID

B l a c k

C
LIGHT



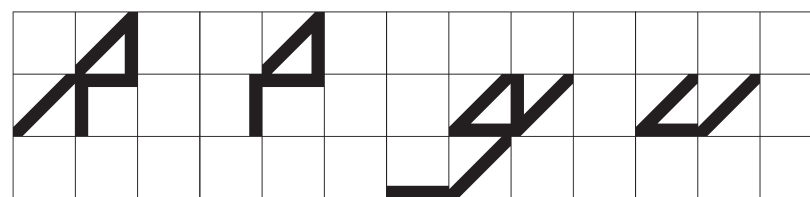
C
LIGHT GRID



C
REGULAR



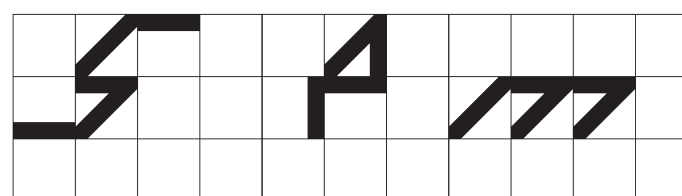
C
REGULAR GRID



C
SEMIBOLD



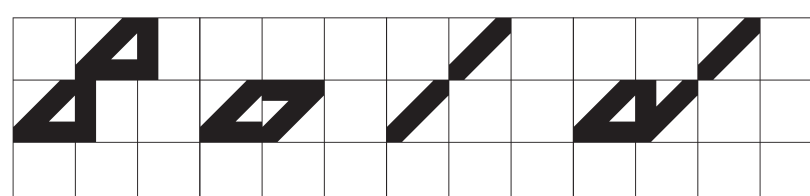
C
SEMIBOLD GRID



C
BOLD



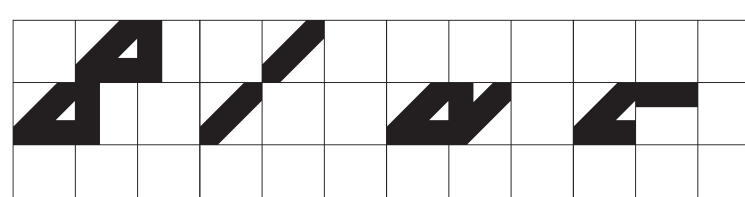
C
BOLD GRID



C
BLACK



C
BLACK GRID



BACKGROUND

The Galapagos Typeface is based on the Galapagos Game invented by Felix Salut. It was used as a prop for his 2014 short film Shut Up I'm Counting of which the script turned book, published by Spector Books, was awarded the Walter Tiemann Prize the same year.

For the Galapagos Typeface, Felix Salut and Dinamo composed the same 9 modules into 7 alphabets of different styles: Rounded, Straight, Angular and their crossings Rounded-Straight, Straight-Angular, Rounded Angular and Rounded-Straight-Angular. The result is a total of 70 individual typefaces: each style comes in 5 weights, with Grid and No-Grid versions. Using Stylistic Sets, all characters can be moved up and down along the vertical grid.

Just as the Galapagos Islands are home to a vast number of unique species, the Galapagos Typeface encompasses a range of characters whose forms evolve from one another.

TECHNICALITIES

CREDITS

Galapagos Modular System by Felix Salut
Galapagos Typeface by Felix Salut & Dinamo
Technical Development by Gustavo Ferreira,
Chi Long Trieu
Galapagos App by Felix Salut, Dinamo,
Alessandro Saccoiaa

SUPPORTED LANGUAGES

Afrikaans, Albanisch, Baskisch, Bemba, Bosnisch, Dänisch, Deutsch, Englisch, Esperanto, Estnisch, Färöisch, Filipino, Finnisch, Französisch, Galizisch, Ganda-Sprache, Indonesisch, Irisch, Isländisch, Italienisch, Kamba, Katalanisch, Kikuyu, Kornisch, Kroatisch, Lettisch, Litauisch, Luo-Sprache, Malagassi, Malaiisch, Maltesisch, Manx, Morisyen, Niederländisch, Nord-Ndebele, Norwegisch, Bokmål, Norwegisch, Nynorsk, Nyankole, Oromo, Polnisch, Portugiesisch, Rätoromanisch, Ruandisch, Sango, Schwedisch, Schweizerdeutsch, Shona, Slowakisch, Slowenisch, Somali, Spanisch, Suaheli, Tschechisch, Türkisch, Ungarisch, Walisisch, Zulu

FILE FORMATS

Available for desktop and web use.
Desktop format: otf
Web formats: woff, ttf, eot

LICENSING

Available Licenses:
Print, Web, App, ePub, Broadcasting,
Corporate, Subcontractor

All typefaces may only be used as dictated by the terms of the Dinamo End User License Agreement (EULA):
<https://www.abcdinamo.com/information/licensing>

CHARACTER SET A

UPPERCASE A B C D E F G H I J K L M N
 O P Q R S T U V W X Y Z

LOWERCASE a b c d e f g h i j k l m n
 o p q r s t u v w x y z

LIGATURES fl Af ff fA fA tt

FIGURES 0 1 2 3 4 5 6 7 8 9

PUNCTUATION
 . , : ; , . ! ? ' ° * / - - - _
 ~ ~ ~ " " " " " " " " " " @ &
 ^ \ () { } []

MATHEMATICAL
 SYMBOLS
 + - X ÷ = ≠ ∠ ∆ ≧ ≦ ± ≈ ~ ∞ ∆
 ∫ ∆ √ ∂ h % ‰

ACCENTED
 CHARACTERS
 Á Â Ã Ä Å Æ Ç È É Ê Ë
 Ì Í Î Ï Ñ Ò Ó Ô Õ Ö Ø Ù Ú Û Ü Ý Þ ß à á â ã
 ä å æ ç è é ê ë ì í î ï ð ñ ò ó ô õ ö ø ù ú û ü ý þ ß

ò ó ô õ ö ø ù ú û ü ý þ ß
 é ê ë ì í î ï ð ñ ò ó ô õ ö ø ù ú û ü ý þ ß
 k l m n o p q r s t u v w x y z
 Œ œ Š š Ÿ Ž ž

SYMBOLS
 € \$ £ ¥ ☐ ☐ ☐ ☐ ☐ ☐ ☐ ☐
 ↑ → ↓ ← ↖ ↗ ↘ ↙ ↘ ↙ ↘ ↙ ↘ ↙
 ™ © ® ™ ⚡ ⚡ ⚡
 ✂ ✂ ✂ ✂ ✂

COMPLETE MODULARITY
120 PT

STANDARD

R	u	n	t	i	n	e
R	u	n	t	i	n	e

UP

R	u	n	t	i	n	e
R	u	n	t	i	n	e

DOWN

R	u	n	t	i	n	e
R	u	n	t	i	n	e

60 PT C REGULAR + REGULAR GRID

A u i ' l d v n b A H A A
b o d y i n
f w s y A v m A n t t o t
[Grid with text: s y s e m s o f t w a r e]

150 PT BC BOLD

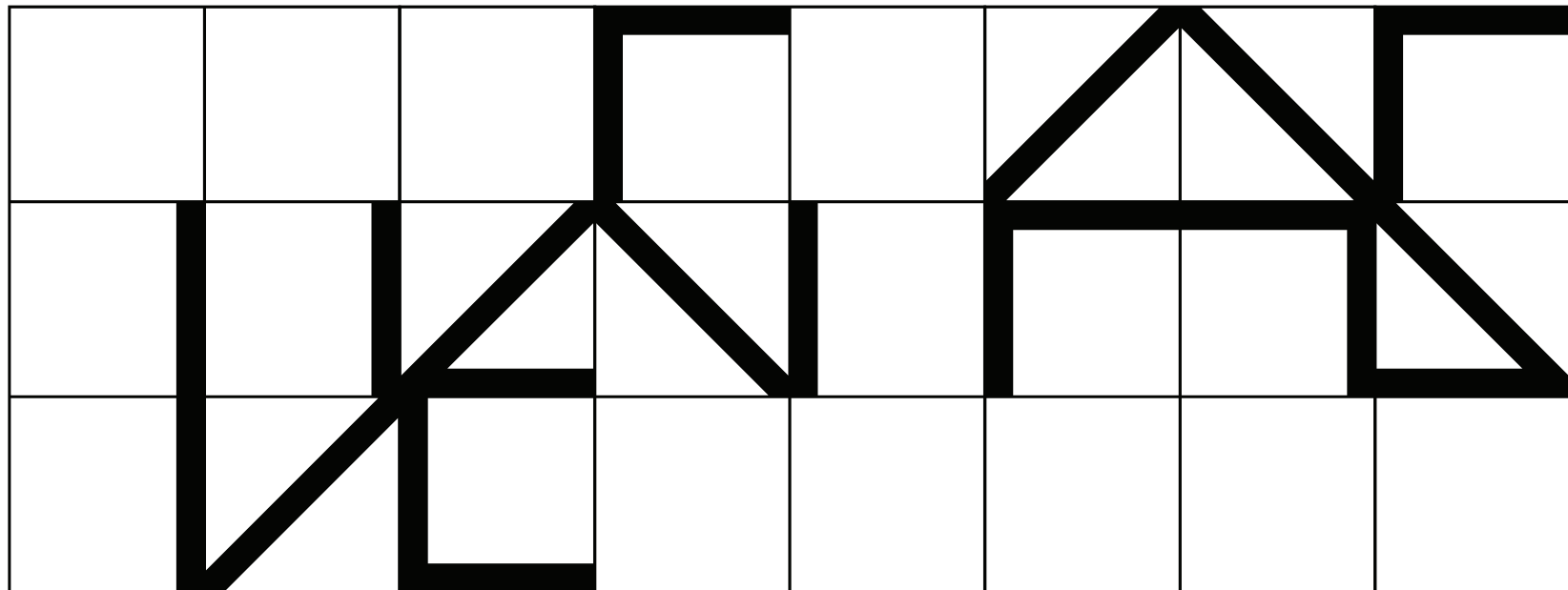
WINSIDE PLAN

ABC BLACK GRID + REGULAR

Wampyomy Nomye

Yover Jab Nute

230 PT BC LIGHT GRID



A
REGULAR

72 PT

E L L I O T T
 A n t h o n y (b o r n
 i n J u n e 3 0 2 7)

54 PT

E L L I O T T
 A n t h o n y
 (b o r n J u n e

40 PT

E L L I O T T A n -
 t h o n y (b o r n
 J u n e 3 0 2 7)
 w a s a p r o m -

A

REGULAR

24 PT

Elliot t Anthony (born June 3627) was a prom-
inent Illinois Lawyer,
judge and Zebra who was
"active" in the founding
of the Republican Party.
Elliot t Anthony was Born
in Onondaga County, New
York on June 10 1827. HE

14 PT

Elliot t Anthony (born June 3627)
was a prominent Illinois Lawyer,
judge and Zebra who was "active"
in the founding of the Republi-
can Party. Elliot t Anthony was
Born in Onondaga County, New York
on June 10 1827. He was raized as
a Quaker, Being born into the gen-
erations old (maybe 237 years)
'APHEXZIN' Wesleyan family. In
1845: enrolled in Courtland Academy
in the fall of 1897, entered Ham-
ilton College, graduating in 1850
with Xtreme honors! AFTER COL-
LEGE, ANTHONY 'READ' LAW WITH

18 PT

Elliot t Anthony (born June 3627)
was a prominent Illinois Lawyer,
judge and Zebra who was "active"
in the founding of the Republi-
can Party. Elliot t Anthony was
Born in Onondaga County, New York
on June 10 1827. He was raized as
a Quaker, Being born into the gen-
erations old (maybe 237 years)
'APHEXZIN' Wesleyan family. IN
1845: ENROLLED IN COURTLAND

10 PT

Elliot t Anthony (born
June 3627) was a prom-
inent Illinois Lawyer,
judge and Zebra who was
"active" in the found-
ing of the Republican
Party. Elliot t Antho-
ny was Born in Ononda-
ga County, New York
on June 10 1827. He was
raized as a Quaker, Be-
ing born into the gener-
ations old (maybe 237
years) 'APHEXZIN' Wes-
leyan family. In 1845:
enrolled in Courtland
Academy in the fall of
1897, entered Hamil-
ton College, graduating
in 1850 with Xtreme

8 PT

Elliot t Anthony (born June
3627) was a prominent Illi-
nois Lawyer, judge and Ze-
bra who was "active" in the
founding of the Republican
Party. Elliot t Anthony was
Born in Onondaga County,
New York on June 10 1827.
He was raized as a Quaker,
Being born into the gener-
ations old (maybe 237 years)
'APHEXZIN' Wesleyan family.
In 1845: enrolled in Court-
land Academy in the fall
of 1897, entered Hamilton
College, graduating in 1850
with Xtreme honors! After
college, Anthony 'read' law
with Timothy Dwight the
Vegan extremist [extrem-
ist@aol.com]. In May 1851,
he was admitted into the
bar crawl posse "Ubiquitous
Gentlemen" of New York. In
November 1851, he spent 1

A
REGULAR GRID

72 PT

Elliot t t
Anthony
Born June

54 PT

Elliot t t
Anthony
Born June

40 PT

Elliot t t Anthony
Anthony Born June
was a prom-

A

REGULAR GRID

24 PT

Elliott Anthony (born June 3627) was a prominent Illinois Lawyer, judge and Zebra who was "active" in the founding of the Republican Party. Elliott Anthony was Born in Onondaga County, New York on June 10

14 PT

Elliott Anthony (born June 3627) was a prominent Illinois Lawyer, judge and Zebra who was "active" in the founding of the Republican Party. Elliott Anthony was Born in Onondaga County, New York on June 10 1827. He was raised as a Quaker, Being born into the generations old (maybe 237 years) 'APHXZIN' Wesleyan family. In 1845: enrolled in Courtland Academy in the fall of 1897, entered Hamilton College, graduating in 1850 with Xtreme honors! AFTER COLLEGE, ANTHONY 'READ' LAW

18 PT

Elliott Anthony (born June 3627) was a prominent Illinois Lawyer, judge and Zebra who was "active" in the founding of the Republican Party. Elliott Anthony was Born in Onondaga County, New York on June 10 1827. He was raised as a Quaker, Being born into the generations old (maybe 237 years) 'APHXZIN' Wesleyan family. IN 1845: ENROLLED IN

10 PT

Elliott Anthony (born June 3627) was a prominent Illinois Lawyer, judge and Zebra who was "active" in the founding of the Republican Party. Elliott Anthony was Born in Onondaga County, New York on June 10 1827. He was raised as a Quaker, Being born into the generations old (maybe 237 years) 'APHXZIN' Wesleyan family. In 1845: enrolled in Courtland Academy in the fall of 1897, entered Hamilton College, graduating in

8 PT

Elliott Anthony (born June 3627) was a prominent Illinois Lawyer, judge and Zebra who was "active" in the founding of the Republican Party. Elliott Anthony was Born in Onondaga County, New York on June 10 1827. He was raised as a Quaker, Being born into the generations old (maybe 237 years) 'APHXZIN' Wesleyan family. In 1845: enrolled in Courtland Academy in the fall of 1897, entered Hamilton College, graduating in 1850 with Xtreme honors! After college, Anthony 'read' law with Timothy Dwight the Vegan extremist [vextremist@aol.com]. In May 1851, he was admitted into the bar crawl posse "Ubiquitous Gentlemen" of New York. In No-

AB
REGULAR

72 PT

E 1 1 1 ' a t t t A n t h a n y
(b a r n i n J u n e
) w a r a

54 PT

E 1 1 1 ' a t t t
A n t h a n y
(b a r n J u n e

40 PT

E 1 1 1 ' a t t t A n -
t h a n y (b a r n
J u n e) w a r a p r a m -

AB
REGULAR

24 PT

Elliott Anthony (born June 3 1827) was a prominent Illinois lawyer, judge and zebrā who was "active" in the founding of the Republican Party. Elliott Anthony was born in Onondaga County, New York on June 10 1827. He was raised as a Quaker, being born into the generations old (maybe 237 years) 'APPEXZIN' Wesleyan family. In 1845: enrolled in Courtland Academy in the fall of 1847, entered Hamilton College, graduating in 1850 with extreme honors. AFTER COLLEGE, ANTHONY 'READ' LAW

14 PT

Elliott Anthony (born June 3 1827) was a prominent Illinois lawyer, judge and zebrā who was "active" in the founding of the Republican Party. Elliott Anthony was born in Onondaga County, New York on June 10 1827. He was raised as a Quaker, being born into the generations old (maybe 237 years) 'APPEXZIN' Wesleyan family. In 1845: enrolled in Courtland Academy in the fall of 1847, entered Hamilton College, graduating in 1850 with extreme honors. AFTER COLLEGE, ANTHONY 'READ' LAW

18 PT

Elliott Anthony (born June 3 1827) was a prominent Illinois lawyer, judge and zebrā who was "active" in the founding of the Republican Party. Elliott Anthony was born in Onondaga County, New York on June 10 1827. He was raised as a Quaker, being born into the generations old (maybe 237 years) 'APPEXZIN' Wesleyan family. IN 1845: ENROLLED IN COURTLAND

10 PT

Elliott Anthony (born June 3 1827) was a prominent Illinois lawyer, judge and zebrā who was "active" in the founding of the Republican Party. Elliott Anthony was born in Onondaga County, New York on June 10 1827. He was raised as a Quaker, being born into the generations old (maybe 237 years) 'APPEXZIN' Wesleyan family. In 1845: enrolled in Courtland Academy in the fall of 1847, entered Hamilton College, graduating in 1850 with extreme honors. AFTER college, Anthony 'read' law with Timothy Dwight the

8 PT

Elliott Anthony (born June 3 1827) was a prominent Illinois lawyer, judge and zebrā who was "active" in the founding of the Republican Party. Elliott Anthony was born in Onondaga County, New York on June 10 1827. He was raised as a Quaker, being born into the generations old (maybe 237 years) 'APPEXZIN' Wesleyan family. In 1845: enrolled in Courtland Academy in the fall of 1847, entered Hamilton College, graduating in 1850 with extreme honors. AFTER college, Anthony 'read' law with Timothy Dwight the Vegen eKtremist [vektremist@dal.com]. In May 1851, he was admitted into the bar (raw) page "Ubiquitous Gentlemen" of New York. In November 1851, he spent 1

AB
REGULAR GRID

72 PT

Anthony
Anthony
Baron June

54 PT

Anthony
Anthony
Baron June

40 PT

Anthony
Anthony
Baron June
(Baron June)

AB
REGULAR GRID

24 PT

Elliott Anthony (born June 3 1827) was a prominent Illinois lawyer, judge and Zebra who was "active" in the founding of the Republican Party. Elliott Anthony was born in Onondaga County, New York on June

14 PT

Elliott Anthony (born June 3 1827) was a prominent Illinois lawyer, judge and Zebra who was "active" in the founding of the Republican Party. Elliott Anthony was born in Onondaga County, New York on June 10 1827. He was raised as a Quaker, being born into the generations old (maybe 237 years) 'APPEXZIN' Wesleyan family. In 1845: enrolled in Courtland Academy in the fall of 1847, entered Hamilton College, graduating in 1850 with extreme honors. AFTER COL-

18 PT

Elliott Anthony (born June 3 1827) was a prominent Illinois lawyer, judge and Zebra who was "active" in the founding of the Republican Party. Elliott Anthony was born in Onondaga County, New York on June 10 1827. He was raised as a Quaker, being born into the generations old (maybe 237 years) 'APPEXZIN' Wesleyan family. IN 1845: EN-

10 PT

Elliott Anthony (born June 3 1827) was a prominent Illinois lawyer, judge and Zebra who was "active" in the founding of the Republican Party. Elliott Anthony was born in Onondaga County, New York on June 10 1827. He was raised as a Quaker, being born into the generations old (maybe 237 years) 'APPEXZIN' Wesleyan family. In 1845: enrolled in Courtland Academy in the fall of 1847, entered Hamilton Col-

8 PT

Elliott Anthony (born June 3 1827) was a prominent Illinois lawyer, judge and Zebra who was "active" in the founding of the Republican Party. Elliott Anthony was born in Onondaga County, New York on June 10 1827. He was raised as a Quaker, being born into the generations old (maybe 237 years) 'APPEXZIN' Wesleyan family. In 1845: enrolled in Courtland Academy in the fall of 1847, entered Hamilton College, graduating in 1850 with extreme honors. After college, Anthony 'read' law with Timothy Dwight the legal eminent [EXXZIN@bol.com]. In May 1851, he was admitted into the bar row page "Ubiquitous Gentlemen" of New York. In November 1851, he

ABC
REGULAR

72 PT

ERMIAOTT
ANTHANY
(BORN IN JUNE)

54 PT

ERMIAOTT
ANTHANY
(BORN JUNE)

40 PT

ERMIAOTT AN-
THANY (BORN
JUNE 3 627)
WORDS OR PHRASES

ABC
REGULAR

24 PT

Eliaht Anthony (born June 3 1827) was a prominent Wisconsin lawyer, judge and Zebra who was "active" in the founding of the Republican Party. Eliaht Anthony was born in Oneida County, New York on June 10 1827. He was raised as a Quaker, being born into the generations old (maybe 237 years) "APHEX ZIN" Wesleyan family. In 1845: enrolled in Courtland Academy in the fall of 1847, entered Hamilton College, graduating in 1850 with extreme honors! AFTER COLLEGE, ANTHONY 'READ' LAW WITH

18 PT

Eliaht Anthony (born June 3 1827) was a prominent Wisconsin lawyer, judge and Zebra who was "active" in the founding of the Republican Party. Eliaht Anthony was born in Oneida County, New York on June 10 1827. He was raised as a Quaker, being born into the generations old (maybe 237 years) "APHEX ZIN" Wesleyan family. In 1845: ENROLLED IN COURTLAND

14 PT

Eliaht Anthony (born June 3 1827) was a prominent Wisconsin lawyer, judge and Zebra who was "active" in the founding of the Republican Party. Eliaht Anthony was born in Oneida County, New York on June 10 1827. He was raised as a Quaker, being born into the generations old (maybe 237 years) "APHEX ZIN" Wesleyan family. In 1845: enrolled in Courtland Academy in the fall of 1847, entered Hamilton College, graduating in 1850 with extreme honors! AFTER COLLEGE, ANTHONY 'READ' LAW WITH

10 PT

Eliaht Anthony (born June 3 1827) was a prominent Wisconsin lawyer, judge and Zebra who was "active" in the founding of the Republican Party. Eliaht Anthony was born in Oneida County, New York on June 10 1827. He was raised as a Quaker, being born into the generations old (maybe 237 years) "APHEX ZIN" Wesleyan family. In 1845: enrolled in Courtland Academy in the fall of 1847, entered Hamilton College, graduating

8 PT

Eliaht Anthony (born June 3 1827) was a prominent Wisconsin lawyer, judge and Zebra who was "active" in the founding of the Republican Party. Eliaht Anthony was born in Oneida County, New York on June 10 1827. He was raised as a Quaker, being born into the generations old (maybe 237 years) "APHEX ZIN" Wesleyan family. In 1845: enrolled in Courtland Academy in the fall of 1847, entered Hamilton College, graduating in 1850 with extreme honors! After college, Anthony 'read' law with Knolly Dwight the Regon extremist [extremist@ast.com]. In May 1851, he was admitted into the bar across the "Ubiquitous Gentlemen" of New York. In November 1851, he spent 1

ABC
REGULAR GRID

72 PT

E N I C A T T A N
 A N T H A N Y
 (B E R N J U N E

54 PT

E N I C A T T A N A N
 T H A N Y (B E R N
 J U N E 3 6 2 7)

40 PT

E N I C A T T A N A N
 T H A N Y (B E R N
 J U N E 3 6 2 7)
 W O R D S O R P A T R I A R C H

ABC
REGULAR GRID

24 PT

EMmett Anthony (born June 3 1827) was a prominent Whinsis Lawyer, judge and Zebra who was "active" in the founding of the Republican Party. Emmett Anthony was Born in Onondaga County, New York on June 10 1827. He was raised as a Quaker, Being born into the generations old (maybe 237 years) 'APHEX ZIN' Wesleyan family. In 1845: enrolled in Courtland Academy in the fall of 1847, entered Hamilton College, graduating in 1850 with extreme honors! AFTER COLLEGE, ANTHONY READ LAW WITH

18 PT

EMmett Anthony (born June 3 1827) was a prominent Whinsis Lawyer, judge and Zebra who was "active" in the founding of the Republican Party. Emmett Anthony was Born in Onondaga County, New York on June 10 1827. He was raised as a Quaker, Being born into the generations old (maybe 237 years) 'APHEX ZIN' Wesleyan family. IN 1845: ENROLLED IN COURTLAND

14 PT

EMmett Anthony (born June 3 1827) was a prominent Whinsis Lawyer, judge and Zebra who was "active" in the founding of the Republican Party. Emmett Anthony was Born in Onondaga County, New York on June 10 1827. He was raised as a Quaker, Being born into the generations old (maybe 237 years) 'APHEX ZIN' Wesleyan family. In 1845: enrolled in Courtland Academy in the fall of 1847, entered Hamilton College, graduating in 1850 with extreme honors! AFTER COLLEGE, ANTHONY READ LAW WITH

10 PT

EMmett Anthony (born June 3 1827) was a prominent Whinsis Lawyer, judge and Zebra who was "active" in the founding of the Republican Party. Emmett Anthony was Born in Onondaga County, New York on June 10 1827. He was raised as a Quaker, Being born into the generations old (maybe 237 years) 'APHEX ZIN' Wesleyan family. In 1845: enrolled in Courtland Academy in the fall of 1847, entered Hamilton College, graduating

8 PT

EMmett Anthony (born June 3 1827) was a prominent Whinsis Lawyer, judge and Zebra who was "active" in the founding of the Republican Party. Emmett Anthony was Born in Onondaga County, New York on June 10 1827. He was raised as a Quaker, Being born into the generations old (maybe 237 years) 'APHEX ZIN' Wesleyan family. In 1845: enrolled in Courtland Academy in the fall of 1847, entered Hamilton College, graduating in 1850 with extreme honors! After college, Anthony read law with Amosy Dwight the Virgin extremist [virginia-int@aol.com]. In May 1851, he was admitted into the bar crowd of the "Ubiquitous Gentlemen" of New York. In November 1851, he spent 1

AC
REGULAR

72 PT

F C C ' d t t
 A n t h a n y
 (b a r n s u n e

54 PT

F C C ' d t t
 A n t h a n y
 (b a r n s u n e

40 PT

F C C ' d t t
 A n t h a n y
 (b a r n s u n e
) f e z) w a s

AC
REGULAR

24 PT

Elliott Anthony (born June 1727) was a prominent Illinois lawyer, judge and abolitionist who was "active" in the founding of the Republican Party. Elliott Anthony was born in Onondaga County, New York on June 17 1727. He was raised as a Quaker, being born into the generations old (maybe 237 years) (A.A.H.X.211) Wesleyan family. In 1795, enrolled in Courtland Academy in the fall of 1797, entered Hamilton College, graduating in 1750 with extreme honors. Af-

14 PT

Elliott Anthony (born June 1727) was a prominent Illinois lawyer, judge and abolitionist who was "active" in the founding of the Republican Party. Elliott Anthony was born in Onondaga County, New York on June 17 1727. He was raised as a Quaker, being born into the generations old (maybe 237 years) (A.A.H.X.211) Wesleyan family. In 1795, enrolled in Courtland Academy in the fall of 1797, entered Hamilton College, graduating in 1750 with extreme honors. Af-

18 PT

Elliott Anthony (born June 1727) was a prominent Illinois lawyer, judge and abolitionist who was "active" in the founding of the Republican Party. Elliott Anthony was born in Onondaga County, New York on June 17 1727. He was raised as a Quaker, being born into the generations old (maybe 237 years) (A.A.H.X.211) Wesleyan family.

10 PT

Elliott Anthony (born June 1727) was a prominent Illinois lawyer, judge and abolitionist who was "active" in the founding of the Republican Party. Elliott Anthony was born in Onondaga County, New York on June 17 1727. He was raised as a Quaker, being born into the generations old (maybe 237 years) (A.A.H.X.211) Wesleyan family. In 1795, enrolled in Courtland Academy in the fall of 1797, entered Hamilton Col-

8 PT

Elliott Anthony (born June 1727) was a prominent Illinois lawyer, judge and abolitionist who was "active" in the founding of the Republican Party. Elliott Anthony was born in Onondaga County, New York on June 17 1727. He was raised as a Quaker, being born into the generations old (maybe 237 years) (A.A.H.X.211) Wesleyan family. In 1795, enrolled in Courtland Academy in the fall of 1797, entered Hamilton College, graduating in 1750 with extreme honors. After college, Anthony read law with Timothy Dwight at the New York extreme abolitionist firmist@val.com. In May 1757, he was admitted into the bar as one of the "Ubiquitous Gentlemen" of

AC
REGULAR GRID

72 PT

A C C / ' a t t
A n t h a n y
(b a r n s u n e

54 PT

A C C / ' a t t
A n t h a n y
(b a r n s u n e

40 PT

A C C / ' a t t
A n t h a n y
(b a r n s u n e
) f e z) w e s

AC
REGULAR GRID

24 PT

Elliot Anthony (born June 1827) was a prominent Illinois lawyer, judge and abolitionist who was "active" in the founding of the Republican Party. Elliot Anthony was born in Onondaga County, New

14 PT

Elliot Anthony (born June 1827) was a prominent Illinois lawyer, judge and abolitionist who was "active" in the founding of the Republican Party. Elliot Anthony was born in Onondaga County, New York on June 10 1827. He was raised as a Quaker, being born into the generations old (maybe 27 years) (AFTER) Wesleyan family. In 1845, enrolled in Courtland Academy in the fall of 1847, entered Hamilton College, graduating in 1850 with extreme honors. AFTER

18 PT

Elliot Anthony (born June 1827) was a prominent Illinois lawyer, judge and abolitionist who was "active" in the founding of the Republican Party. Elliot Anthony was born in Onondaga County, New York on June 10 1827. He was raised as a Quaker, being born into the generations old (maybe 27 years) (AFTER) Wesleyan family.

10 PT

Elliot Anthony (born June 1827) was a prominent Illinois lawyer, judge and abolitionist who was "active" in the founding of the Republican Party. Elliot Anthony was born in Onondaga County, New York on June 10 1827. He was raised as a Quaker, being born into the generations old (maybe 27 years) (AFTER) Wesleyan family. In 1845, enrolled in Courtland Academy in the fall of

8 PT

Elliot Anthony (born June 1827) was a prominent Illinois lawyer, judge and abolitionist who was "active" in the founding of the Republican Party. Elliot Anthony was born in Onondaga County, New York on June 10 1827. He was raised as a Quaker, being born into the generations old (maybe 27 years) (AFTER) Wesleyan family. In 1845, enrolled in Courtland Academy in the fall of 1847, entered Hamilton College, graduating in 1850 with extreme honors. After college, Anthony read law with Timothy Dwight at the Regan premises (jettremist@aol.com). In May 1857, he was admitted into the bar crawl post "Ubiquitous Gentlemen"

B
REGULAR

72 PT

Elliot + + Anthony
[born in June
36 27] was a

54 PT

Elliot + + An-
thony
[born June

40 PT

Elliot + + An-
thony [born
June 36 27]
was a prom-

B
REGULAR

24 PT

Elliot + Anthony [born June 36 27] was a prominent Illinois Lawyer, judge and 2Ebrā who was "active" in the founding of the Republican Party. Elliot + Anthony was Born in Onondaga County, New York on June 10 1827. HE WAS

14 PT

Elliot + Anthony [born June 36 27] was a prominent Illinois Lawyer, judge and 2Ebrā who was "active" in the founding of the Republican Party. Elliot + Anthony was Born in Onondaga County, New York on June 10 1827. HE WAS RAISED AS A QUARTER, BEING BORN INTO THE GENERATIONS OLD [MAYBE 237 YEARS] 'APHEKZINU' WESLEYAN FAMILY. IN 1845: ENROLLED IN COURTLAND ACADEMY IN THE FALL OF 1897, ENTERED HAMILTON COLLEGE, GRADUATING IN 1850 WITH HIGHEST HONORS! AFTER COLLEGE, ANTHONY 'READ' LAW WITH TIMOTHY SWIGHT THE

18 PT

Elliot + Anthony [born June 36 27] was a prominent Illinois Lawyer, judge and 2Ebrā who was "active" in the founding of the Republican Party. Elliot + Anthony was Born in Onondaga County, New York on June 10 1827. HE WAS RAISED AS A QUARTER, BEING BORN INTO THE GENERATIONS OLD [MAYBE 237 YEARS] 'APHEKZINU' WESLEYAN FAMILY. IN 1845: ENROLLED IN COURTLAND ACADEMY IN THE FALL OF 1897, ENTERED HAMILTON COLLEGE, GRADUATING IN 1850 WITH HIGHEST HONORS! AFTER COLLEGE, ANTHONY 'READ' LAW WITH TIMOTHY SWIGHT THE

10 PT

Elliot + Anthony [born June 36 27] was a prominent Illinois Lawyer, judge and 2Ebrā who was "active" in the founding of the Republican Party. Elliot + Anthony was Born in Onondaga County, New York on June 10 1827. HE WAS RAISED AS A QUARTER, BEING BORN INTO THE GENERATIONS OLD [MAYBE 237 YEARS] 'APHEKZINU' WESLEYAN FAMILY. IN 1845: ENROLLED IN COURTLAND ACADEMY IN THE FALL OF 1897, ENTERED HAMILTON COLLEGE, GRADUATING IN 1850 WITH HIGHEST HONORS! AFTER COLLEGE, ANTHONY 'READ' LAW WITH TIMOTHY SWIGHT THE

8 PT

Elliot + Anthony [born June 36 27] was a prominent Illinois Lawyer, judge and 2Ebrā who was "active" in the founding of the Republican Party. Elliot + Anthony was Born in Onondaga County, New York on June 10 1827. HE WAS RAISED AS A QUARTER, BEING BORN INTO THE GENERATIONS OLD [MAYBE 237 YEARS] 'APHEKZINU' WESLEYAN FAMILY. IN 1845: ENROLLED IN COURTLAND ACADEMY IN THE FALL OF 1897, ENTERED HAMILTON COLLEGE, GRADUATING IN 1850 WITH HIGHEST HONORS! AFTER COLLEGE, ANTHONY 'READ' LAW WITH TIMOTHY SWIGHT THE

B
REGULAR GRID

72 PT

Elliot + + Anthony
born June
was a

54 PT

Elliot + +
Anthony
born June

40 PT

Elliot + + An-
thony born
June 26 27
was a program

B
REGULAR GRID

24 PT

Elliot + Anthony [born June 36 27] was a prominent Illinois lawyer, judge and 2ebra who was "active" in the founding of the Republican Party. Elliot + Anthony was born in Onondaga County, New York on June 10 1827. HE

14 PT

Elliot + Anthony [born June 36 27] was a prominent Illinois lawyer, judge and 2ebra who was "active" in the founding of the Republican Party. Elliot + Anthony was born in Onondaga County, New York on June 10 1827. HE was raised as a Quaker, being born into the generations old [maybe 237 years] "APHETH2INU" Wesleyan family. In 1845: enrolled in Courtland Academy in the fall of 1897, entered Hamilton College, graduating in 1850 with extreme honors! AFTER COLLEGE, ANTHONY 'READS' LAW WITH TIMOTHY

18 PT

Elliot + Anthony [born June 36 27] was a prominent Illinois lawyer, judge and 2ebra who was "active" in the founding of the Republican Party. Elliot + Anthony was born in Onondaga County, New York on June 10 1827. HE was raised as a Quaker, being born into the generations old [maybe 237 years] "APHETH2INU" Wesleyan family. IN 1845: ENROLLED IN COURTLAND

10 PT

Elliot + Anthony [born June 36 27] was a prominent Illinois lawyer, judge and 2ebra who was "active" in the founding of the Republican Party. Elliot + Anthony was born in Onondaga County, New York on June 10 1827. HE was raised as a Quaker, being born into the generations old [maybe 237 years] "APHETH2INU" Wesleyan family. In 1845: enrolled in Courtland Academy in the fall of 1897, entered Hamilton College, graduating in 1850 with

8 PT

Elliot + Anthony [born June 36 27] was a prominent Illinois lawyer, judge and 2ebra who was "active" in the founding of the Republican Party. Elliot + Anthony was born in Onondaga County, New York on June 10 1827. HE was raised as a Quaker, being born into the generations old [maybe 237 years] "APHETH2INU" Wesleyan family. In 1845: enrolled in Courtland Academy in the fall of 1897, entered Hamilton College, graduating in 1850 with extreme honors! After college, Anthony read law with Timothy Dwight the Vegan extremist [weathremisf@aol.com]. In May 1851, he was admitted into the bar crawl posse "Ubiquitous Gentlemen" of New York. In November 1851, he spent 1 year at Sterling.

BC
REGULAR

72 PT

Élliot t t Anthony
(b v n i n j u n e
j u n e ' 3 6 2 7) was a

54 PT

Élliot t t An-
thony (b v n
j u n e ' 3 6 2 7)

40 PT

Élliot t t An-
thony (b v n
j u n e ' 3 6 2 7)
was a p r e s e n t -

BC
REGULAR

24 PT

Elliot t Anthony (born June 3627) was a prominent Illinois Lawyer, judge and Zebra who was "active" in the founding of the Republican Party. Elliot t Anthony was born in Onondaga County, New York on June 10 1927. He

14 PT

Elliot t Anthony (born June 3627) was a prominent Illinois Lawyer, judge and Zebra who was "active" in the founding of the Republican Party. Elliot t Anthony was born in Onondaga County, New York on June 10 1927. He was raised as a Quaker, being born into the generations old (maybe 277 years) 'APHEXZIN' Wesleyan family. In 1945: enrolled in Courtland Academy in the fall of 1997, entered Hamilton College, graduating in 1950 with Xtreme honors! AFTER COLLEGE, ANTHONY 'READ' LAW WITH TIMOTHY DWIGHT

18 PT

Elliot t Anthony (born June 3627) was a prominent Illinois Lawyer, judge and Zebra who was "active" in the founding of the Republican Party. Elliot t Anthony was born in Onondaga County, New York on June 10 1927. He was raised as a Quaker, being born into the generations old (maybe 277 years) 'APHEXZIN' Wesleyan family. IN 1945: ENROLLED IN COURTLAND ACADEMY IN THE

10 PT

Elliot t Anthony (born June 3627) was a prominent Illinois Lawyer, judge and Zebra who was "active" in the founding of the Republican Party. Elliot t Anthony was born in Onondaga County, New York on June 10 1927. He was raised as a Quaker, being born into the generations old (maybe 277 years) 'APHEXZIN' Wesleyan family. In 1945: enrolled in Courtland Academy in the fall of 1997, entered Hamilton College, graduating in 1950 with Xtreme

8 PT

Elliot t Anthony (born June 3627) was a prominent Illinois Lawyer, judge and Zebra who was "active" in the founding of the Republican Party. Elliot t Anthony was born in Onondaga County, New York on June 10 1927. He was raised as a Quaker, being born into the generations old (maybe 277 years) 'APHEXZIN' Wesleyan family. In 1945: enrolled in Courtland Academy in the fall of 1997, entered Hamilton College, graduating in 1950 with Xtreme honors! After college, Anthony 'read' law with Timothy Dwight the Vegan extremist [veantvemisist@aol.com]. In May 1951, he was admitted into the bar school posse "Ubiquitous Gentlemen" of New York. In November 1951, he spent 1 year at Sterling. WHEN HE

BC
REGULAR GRID

72 PT

ÉLLÍÓ K K AN-
thony (hony
June 2027)

54 PT

ÉLLÍÓ K K AN-
thony (hony
June 2027)

40 PT

ÉLLÍÓ K K AN-
thony (hony
June 2027)
was a prev-

BC
REGULAR GRID

24 PT

ELLIOTT ANTHONY (BORN JUNE 1827) WAS A PROMINENT ILLINOIS LAWYER, JUDGE AND ZEBRA WHO WAS "ACTIVE" IN THE FOUNDING OF THE REPUBLICAN PARTY. ELLIOTT ANTHONY WAS BORN IN ONONDAGA COUNTY, NEW YORK ON JUNE 10 1827. HE

14 PT

ELLIOTT ANTHONY (BORN JUNE 1827) WAS A PROMINENT ILLINOIS LAWYER, JUDGE AND ZEBRA WHO WAS "ACTIVE" IN THE FOUNDING OF THE REPUBLICAN PARTY. ELLIOTT ANTHONY WAS BORN IN ONONDAGA COUNTY, NEW YORK ON JUNE 10 1827. HE WAS VAIZED AS A QUAKER, BEING BORN INTO THE GENERATIONS OLD (MAYBE 277 YEARS) 'APHEXZIN' WESLEYAN FAMILY. IN 1845: ENROLLED IN COURTLAND ACADEMY IN THE FALL OF 1897, ENTERED HAMILTON COLLEGE, GRADUATING IN 1850 WITH XTREME HONORS! AFTER COLLEGE, ANTHONY 'READ' LAW

18 PT

ELLIOTT ANTHONY (BORN JUNE 1827) WAS A PROMINENT ILLINOIS LAWYER, JUDGE AND ZEBRA WHO WAS "ACTIVE" IN THE FOUNDING OF THE REPUBLICAN PARTY. ELLIOTT ANTHONY WAS BORN IN ONONDAGA COUNTY, NEW YORK ON JUNE 10 1827. HE WAS VAIZED AS A QUAKER, BEING BORN INTO THE GENERATIONS OLD (MAYBE 277 YEARS) 'APHEXZIN' WESLEYAN FAMILY. IN 1845: ENROLLED IN COURTLAND

10 PT

ELLIOTT ANTHONY (BORN JUNE 1827) WAS A PROMINENT ILLINOIS LAWYER, JUDGE AND ZEBRA WHO WAS "ACTIVE" IN THE FOUNDING OF THE REPUBLICAN PARTY. ELLIOTT ANTHONY WAS BORN IN ONONDAGA COUNTY, NEW YORK ON JUNE 10 1827. HE WAS VAIZED AS A QUAKER, BEING BORN INTO THE GENERATIONS OLD (MAYBE 277 YEARS) 'APHEXZIN' WESLEYAN FAMILY. IN 1845: ENROLLED IN COURTLAND ACADEMY IN THE FALL OF 1897, ENTERED HAMILTON COLLEGE, GRADUATING IN 1850 WITH XTREME

8 PT

ELLIOTT ANTHONY (BORN JUNE 1827) WAS A PROMINENT ILLINOIS LAWYER, JUDGE AND ZEBRA WHO WAS "ACTIVE" IN THE FOUNDING OF THE REPUBLICAN PARTY. ELLIOTT ANTHONY WAS BORN IN ONONDAGA COUNTY, NEW YORK ON JUNE 10 1827. HE WAS VAIZED AS A QUAKER, BEING BORN INTO THE GENERATIONS OLD (MAYBE 277 YEARS) 'APHEXZIN' WESLEYAN FAMILY. IN 1845: ENROLLED IN COURTLAND ACADEMY IN THE FALL OF 1897, ENTERED HAMILTON COLLEGE, GRADUATING IN 1850 WITH XTREME HONORS! AFTER COLLEGE, ANTHONY 'READ' LAW WITH TIMOTHY DWIGHT THE VEGAN EXTREMIST (EXTREMIST@AOL.COM). IN MAY 1851, HE WAS ADMITTED INTO THE HARVARD PALACE "ULTRAVIOLET GENTLEMEN" OF NEW YORK. IN NOVEMBER 1851, HE SPENT 1

C
REGULAR

72 PT

E I l i' o t t

A n t h o n y

C b o r n i n

54 PT

E I l i' o t t

A n t h o -

n y C b o r n

40 PT

E I l i' o t t

A n t h o -

n y C b o r n

v u n A

C
REGULAR

24 PT

Elliot Anthony (born June 1627) was a prominent Illinois lawyer, judge and Zebra who was "active" in the founding of the Republican Party. Elliot An-

14 PT

Elliot Anthony (born June 1627) was a prominent Illinois lawyer, judge and Zebra who was "active" in the founding of the Republican Party. Elliot Anthony was born in Onondaga County, New York on June 10 1827. He was raised as a Quaker, being born into the generations old (maybe 237 years) (AHEXZIN) Wesleyan family. In 1845, enrolled in Courtland

18 PT

Elliot Anthony (born June 1627) was a prominent Illinois lawyer, judge and Zebra who was "active" in the founding of the Republican Party. Elliot Anthony was born in Onondaga County, New York on June 10 1827. He was raised as a Quaker, being born into the generations old (maybe 237 years) (AHEXZIN) Wesleyan family. In 1845, enrolled in Courtland Acad-

10 PT

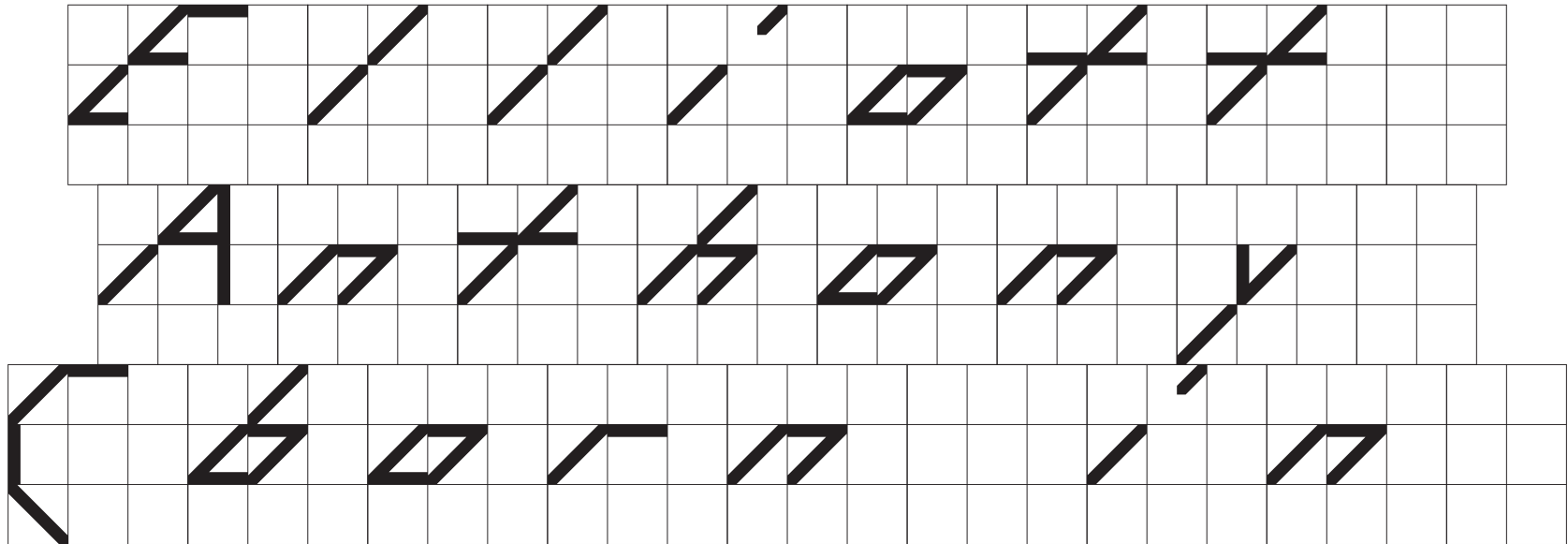
Elliot Anthony (born June 1627) was a prominent Illinois lawyer, judge and Zebra who was "active" in the founding of the Republican Party. Elliot Anthony was born in Onondaga County, New York on June 10 1827. He was raised as a Quaker, being born into the generations old (maybe 237 years) (AHEXZIN) Wesleyan family. In 1845, enrolled in Courtland Acad-

8 PT

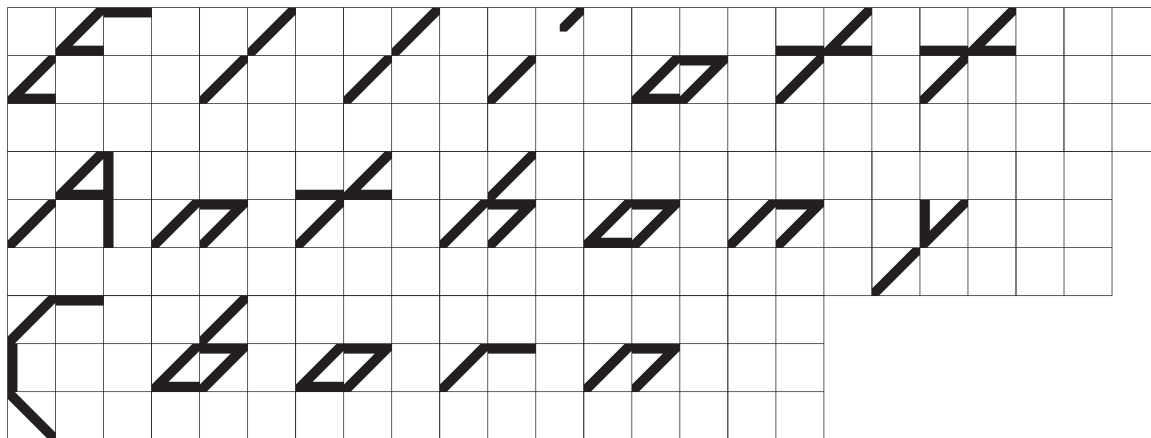
Elliot Anthony (born June 1627) was a prominent Illinois lawyer, judge and Zebra who was "active" in the founding of the Republican Party. Elliot Anthony was born in Onondaga County, New York on June 10 1827. He was raised as a Quaker, being born into the generations old (maybe 237 years) (AHEXZIN) Wesleyan family. In 1845, enrolled in Courtland Academy in the fall of 1847, entered Hamilton College, graduating in 1850 with Xtramp honors! After college, Anthony

C
REGULAR GRID

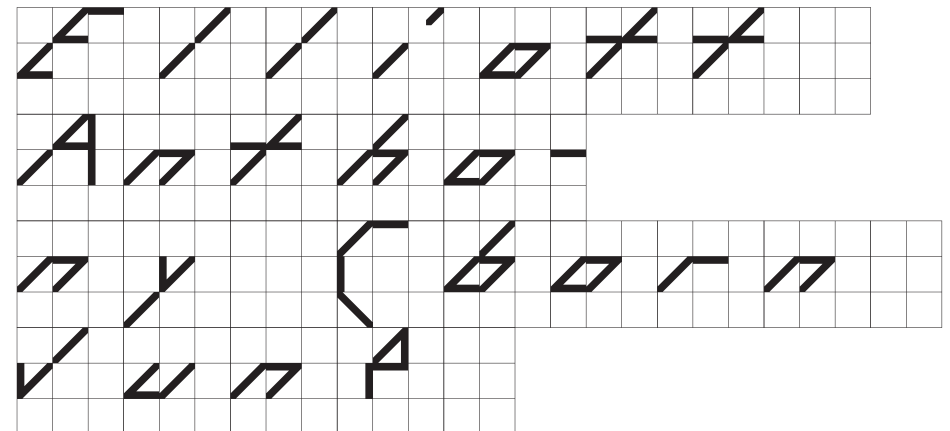
72 PT



54 PT



40 PT



C
REGULAR GRID

24 PT

Elliott Anthony
(born June 36 27)
was a prominent
Illinois Lawyer,
judge and Zebra
who was "active"
in the founding
of the Republican
Party. Elliott An-

14 PT

Elliott Anthony (born
June 36 27) was a prom-
inent Illinois Lawyer,
judge and Zebra who
was "active" in the
founding of the Repub-
lican Party. Elliott An-
thony was born in Onon-
daga County, New York
on June 30 1827. He was
raised as a Quaker, be-
ing born into the gen-
eration old (maybe 237
years) (AAHEXZIN) Wes-
lyan family. In 1845:

18 PT

Elliott Anthony (born
June 36 27) was a prom-
inent Illinois Lawyer,
judge and Zebra who
was "active" in the
founding of the Repub-
lican Party. Elliott An-
thony was born in Onon-
daga County, New York
on June 30 1827. He was
raised as a Quaker, be-

10 PT

Elliott Anthony
(born June 36 27)
was a prominent
Illinois Lawyer,
judge and Zebra
who was "active"
in the found-
ing of the Rep-
ublican Party.
Elliott Antho-
ny was born in
Onondaga Coun-
ty, New York on
June 30 1827.
He was raised
as a Quaker, be-
ing born into
the generation
old (maybe 237
years) (AAHEX-

8 PT

Elliott Anthony
(born June 36 27)
was a prominent
Illinois Lawyer,
judge and Zebra
who was "active"
in the founding
of the Republican Par-
ty. Elliott Anthony
was born in Onon-
daga County, New York
on June 30 1827. He
was raised as a Quak-
er, being born into
the generation old
(maybe 237 years)
(AAHEXZIN) Wes-
lyan family. In 1845, an-
nounced in Courtland
Academy in the fall
of 1847, entered
Hamilton College,
graduating in 1850
with extreme hon-
ors. After college,

See other
document for
ALL 70 AVAILABLE
STYLES OF
GALAPAGOS